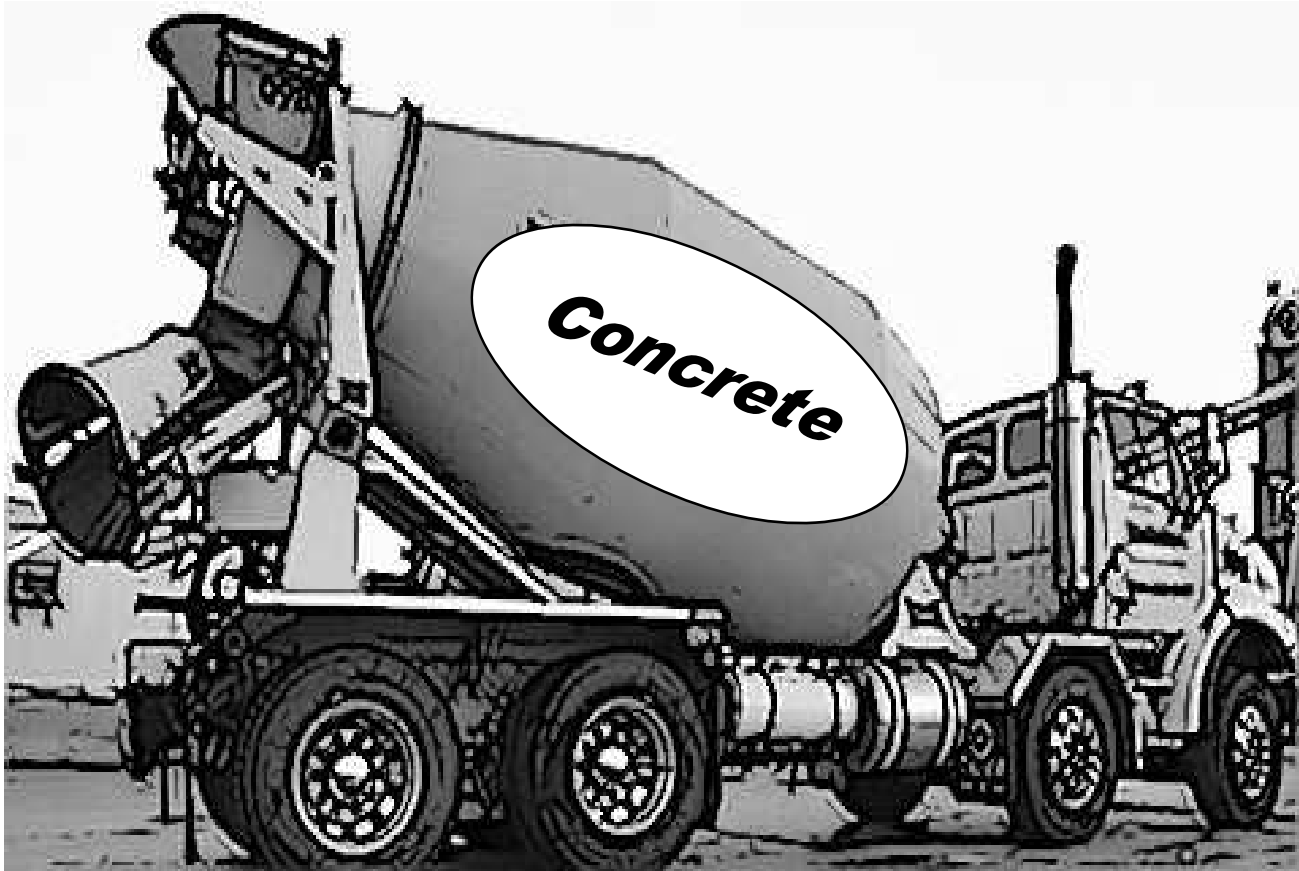


London Mixer Parts

SECTION 23

London Mixer Parts



**London Mixer Parts
Parts Book Page Index**

Mixer Accessories 29-4 to 8

Shute Shutter 29-9

Street Guard 29-10 to 11

Air Components 29-12 to 14

Hopper Bibs 29-15

Front Pedestals 29-16 to 18

Rear Pedestals 29-19 to 30

ZF Gearbox 29-31

Chute Lift Cylinder 29-32 to 33

Eaton Pump & Motor 29-34 to 39

Chutes 29-40 to 51

Hoppers 29-52 to 55

Watertanks 29-56 to 62

Drum Controls 29-63 & 64

Rollers 29-65 to 67

Rear Ladder Assy 29-68 to 71

Fender Assembly 29-72 to 77

Miscellaneous Parts 29-78 to 84

**London Mixer Parts
MIXER ACCESSORIES**

HANDY CHUTE & ELEPHANT TRUNK



**CLC85
Handy Chute
Elephant
Trunk 5ft
scetions**

CHUTE SCRAPER



**C1060
Chute Scraper with
Handle**



**C1060A
Chute Scraper Handle**

London Mixer Parts

MIXER ACCESSORIES

BR1003
Whisk Broom



BR1000
Acid Brush 8" Head

BR1000B
Acid Brush
20" Handle



BR1002
Acid Brush 8" Head with
5ft wooden handle

BR1000B
Wooden Acid Brush Handle
5ft



BR1000C
Heavy Duty 6ft
Wooden Acid Brush
Handle



BR1001
Plastic Brush Handle Tips

London Mixer Parts

SERIAL # TAGS

SP1001 McNEILUS

SP1000 SMITH

TRANSIT MIXER

SERIAL NUMBER _____

DRUM VOLUME _____ CU. FT. _____ CU. YD.

MEASURING CAPACITY _____ GALS. _____ LITERS

MIXING SPEED RANGE: 6 TO 18 R.P.M.

AGITATING SPEED RANGE: 1 TO 6 R.P.M.

WATER TANK CAPACITIES

MEASURING CAPACITY _____ GALS. _____ LITERS

T.L. SMITH MACHINE
SPRINGVILLE, NEW YORK, U.S.A.

MIXER MAXIMUM CAPACITY

SERIAL NUMBER _____

DRUM VOLUME _____ CU. FT. _____ CU. YD.

MIXER RATED MIX CAPACITY _____ CU. YD. _____ CU. M.

AVERAGE AGITATOR CAPACITY _____ CU. YD. _____ CU. M.

MIXING SPEED RANGE: 6 TO 18 R.P.M.

AGITATING SPEED RANGE: 2 TO 6 R.P.M.

WATER TANK CAPACITIES

MEASURING CAPACITY _____ GALS. _____ LITERS

McNeilus

SP1002 REX

Rex 770

SERIAL NUMBER _____

DRUM VOLUME _____

MIXING SPEED: 6 - 18 RPM

AGITATING SPEED: 2 - 6 RPM

WATER TANK CAPACITY: 100 GALS.

MEASURING CAPACITY: 100 GALS.

DE1000 SAFETY DECAL KIT



London Mixer Parts

PHP13

PORTABLE HYDRAULIC POWER UNIT

GOT A MIXER DOWN WITH A LOAD OF CONCRETE SETTING UP? IF YOU HAD THIS UNIT ON YOUR FLEET MECHANIC TRUCK - YOU COULD SAVE THAT LOAD OF CONCRETE OR AT LEAST THE MIXER DRUM. CALL FOR PRICING ON THE UNIT, HOSE KITS AND EQUIPMENT SPECIFICS



DON'T LET A PUMP FAILURE CAUSE YOU TO LOSE A DRUM TOO!

London Mixer Parts

MIXER ACCESSORIES

C1072

CHUTE FUNNEL 16" STANDARD

C1072A

CHUTE FUNNEL 18" PAVER

C1073

FUNNEL SOCKS



MB-40973-02

BLACK MESH GREASE GUARD

25" WIDE x 11 FOOT LONG



London Mixer Parts

MIXER ACCESSORIES

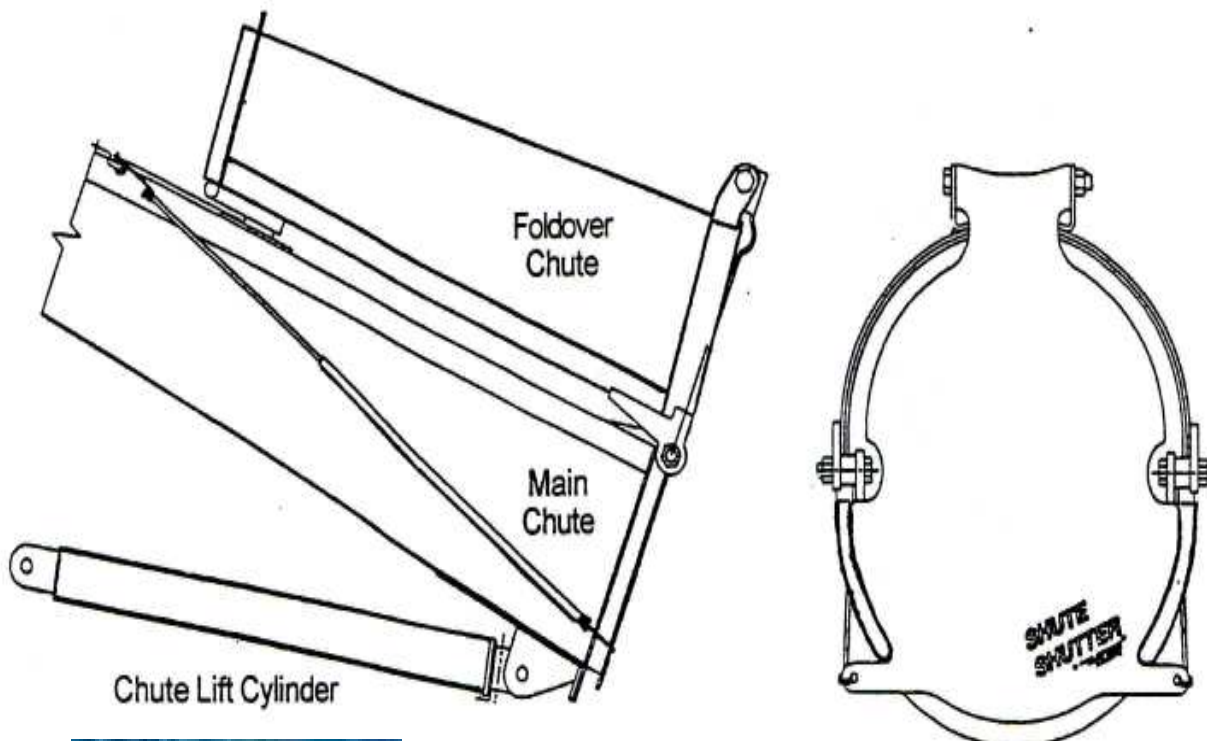
SS10000 McNEILUS SHUTE SHUTTER

SS10017 McNEILUS AUTO LOCK KIT

SS11800 OSHKOSH POWER FOLD SHUTTER KIT

SS11900 ADVANCE 2 SECTION MANUAL SHUTTER

SS11917 ADVANCE AUTO LOCK KIT



McNEILUS



**OSHKOSH
POWER FOLD**



ADVANCE

London Mixer Parts

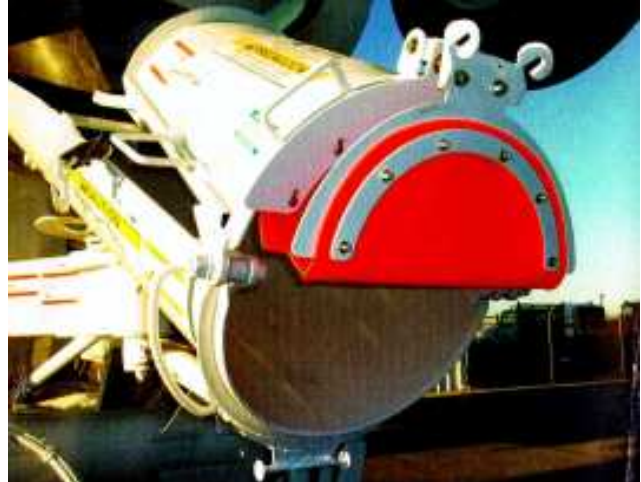
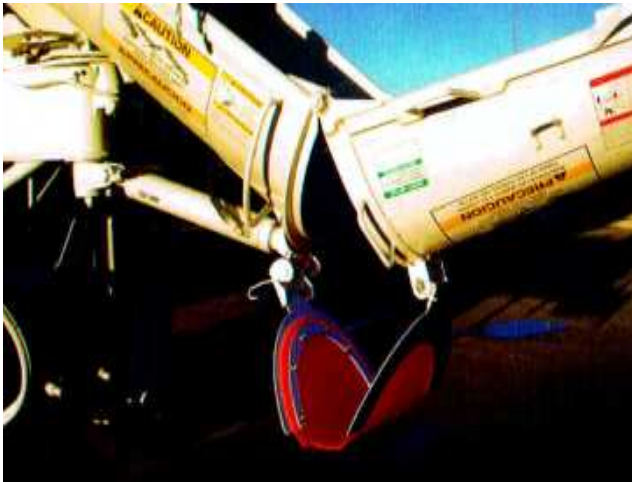
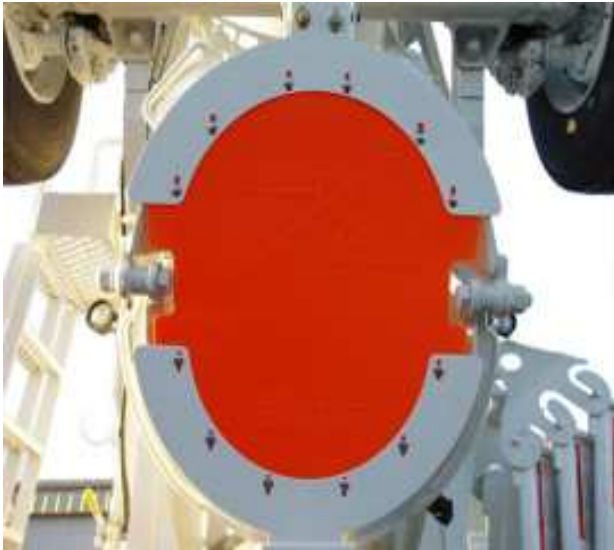
SG1 STREET GUARD



***Urathane Colors
Orange - Red - Blue and
Black - Frame is White***

London Mixer Parts

SG1 STREET GUARD



Street Guard is safe and durable - low maintenance - easy to use - adjustable - stops spills at lights and inclines.

London Mixer Parts

AIR COMPONENTS



CL 1000
MAC AIR VALVE



MA-37861
**T24 AIR BRAKE
ACTUATOR &
CLEVIS**



CL 1003
**T16 AIR
CHAMBER &
CLEVIS**



W 1031
QUICK EXHAUST VALVE



CL1001
**3366000
Humphrey
Air Valve**



W 1025
**ADJUSTABLE AIR
REGULATOR**

W 1027
HOLDBACK VALVE



W 1028
**HOLDBACK 60#
VALVE**

W 1028A
**HOLDBACK 75#
VALVE**

W 1026
NON ADJUSTABLE AIR REGULATOR

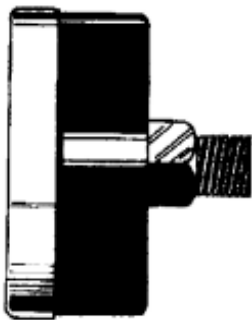


CL 1021
**MAC HOPPER
LIFT VALVE**



London Mixer Parts

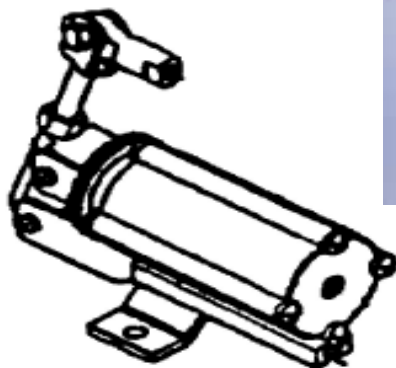
AIR COMPONENTS



W 1023
0-100 Air Gauge
Back Mount



W 1023 A
0-100 Air Gauge
Bottom Mount



CON 2051
HH-01022-000
Air Control
Cylinder

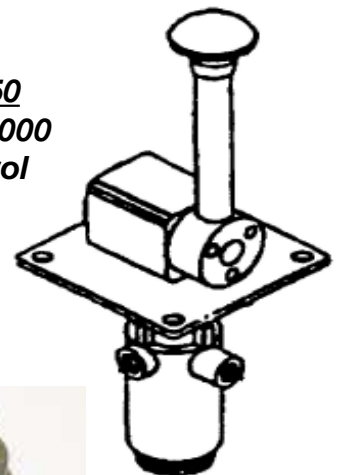


W 1022
3 Way Valve 3/8 Port

W 1021
3 Way Valve 1/4 Port



CON 2050
HH-01023-000
Air Control
Valve



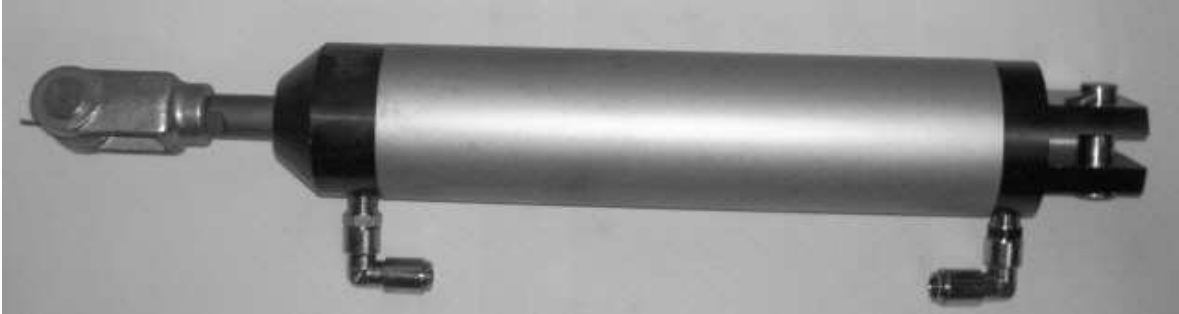
HOP1021C
AIR HOPPER VALVE



MA-40843
London Air Chute
Lock Valve
Burkert

London Mixer Parts

AIR COMPONENTS



HOP 1019
SMITH HOPPER
LIFT CYLINDER
2" Bore x 8" Stroke

MB-38614
LONDON HOPPER
LIFT CYLINDER
3" Bore x 8" Stroke

HOP 1021
McNEILUS HOPPER
LIFT CYLINDER
2-1/2" Bore x 8" Stroke

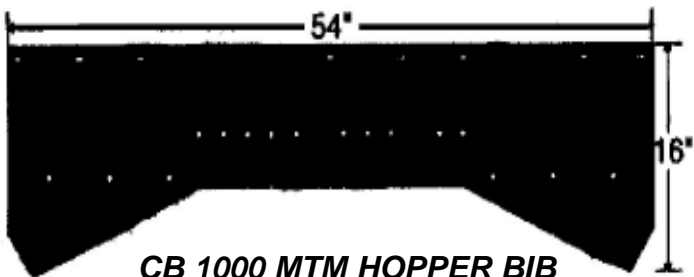
CL1015
McNeilus Chute Lock
Mac Valve
McNeilus # 85284

CL1016
McNeilus Hopper Lift
Mac Valve
McNeilus # 85288

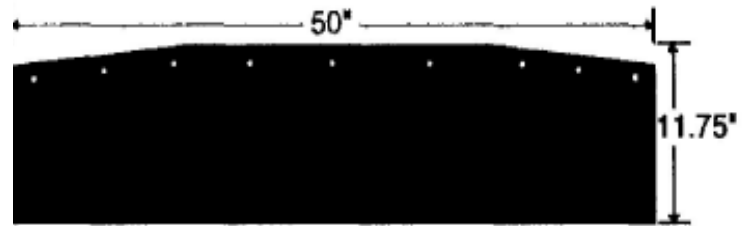


London Mixer Parts

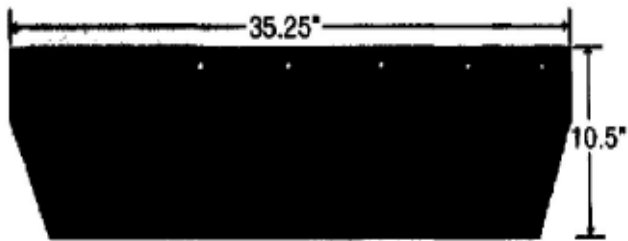
HOPPER BIBS



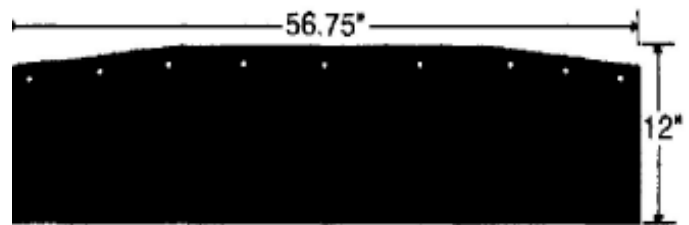
CB 1000 MTM HOPPER BIB
11 HOLE
OEM # 120.115236A



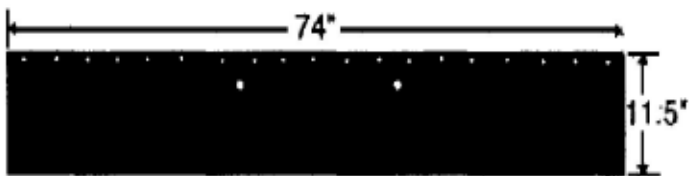
CB 1008A LONDON HOPPER BIB
OEM # MB-29376



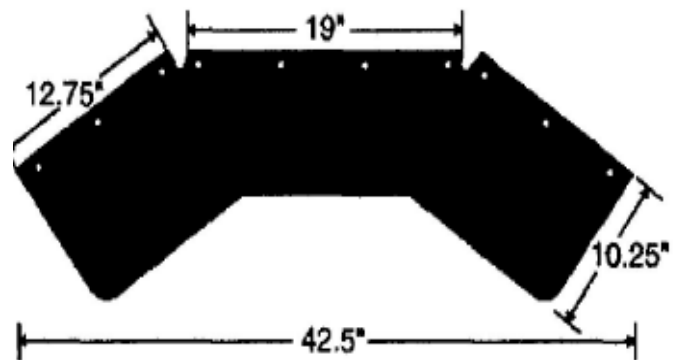
CB 1000B MTM HOPPER BIB 7 Hole
OEM # 120.82087A



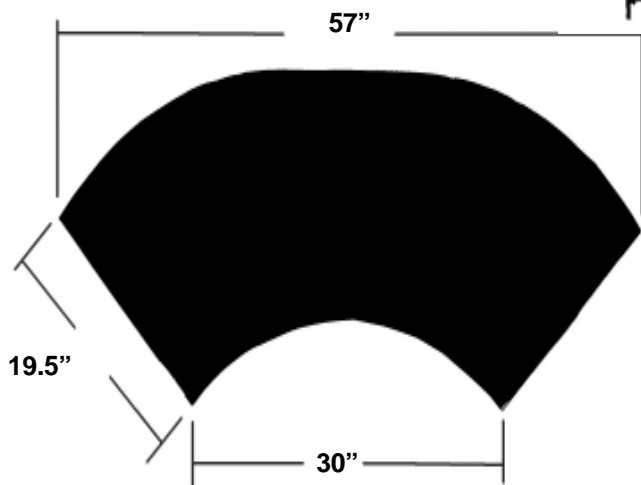
CB 1008 LONDON PAVER HOPPER BIB
OEM # MB-38566



CB 1000A MTM HOPPER BIB 19 Hole
OEM # 120.85267B



CB 1011 JAEGER HOPPER BIB
OEM # 59533-1



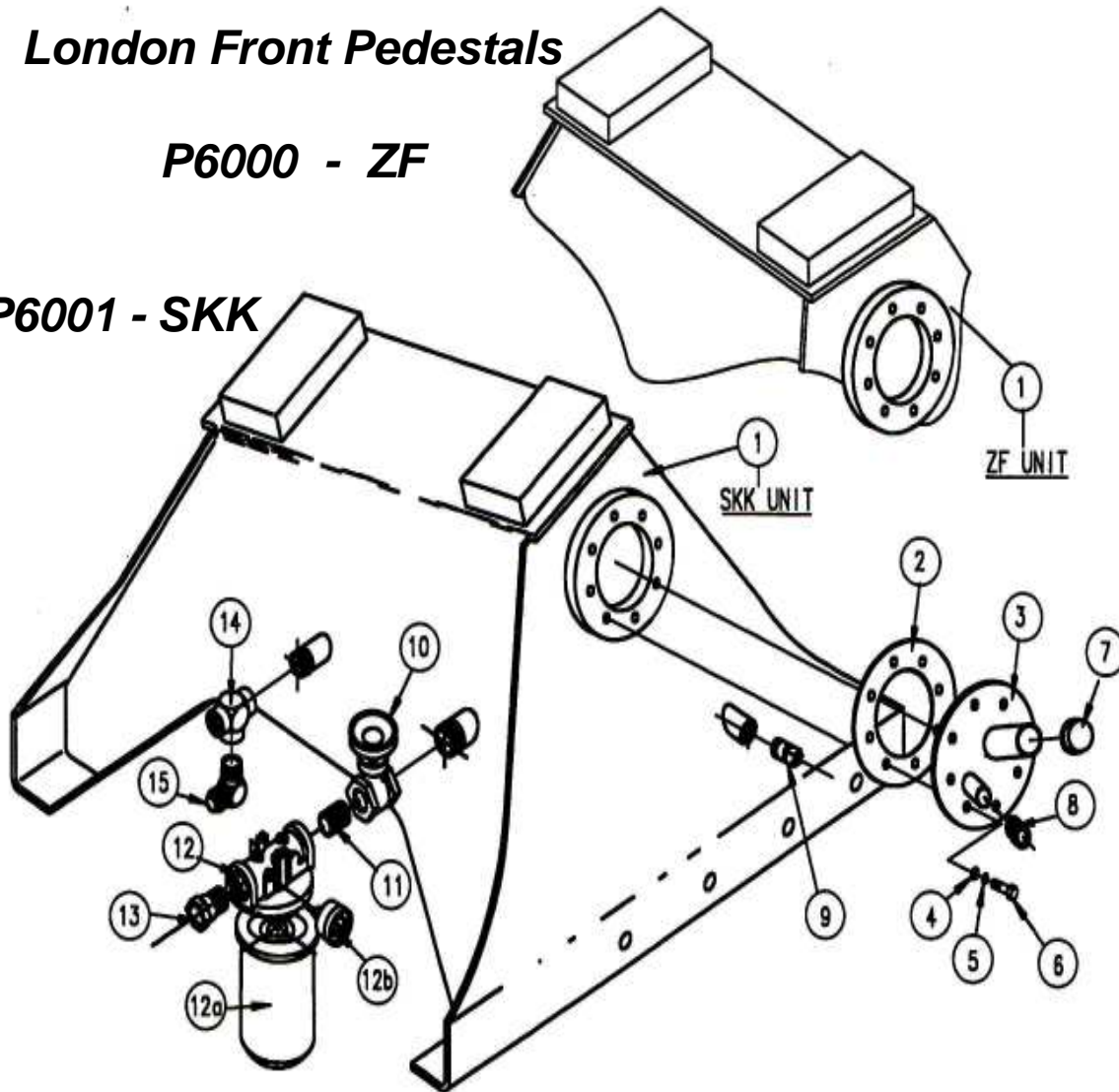
CB 1005 SMITH HOPPER BIB
OEM # 43940-055

London Mixer Parts

London Front Pedestals

P6000 - ZF

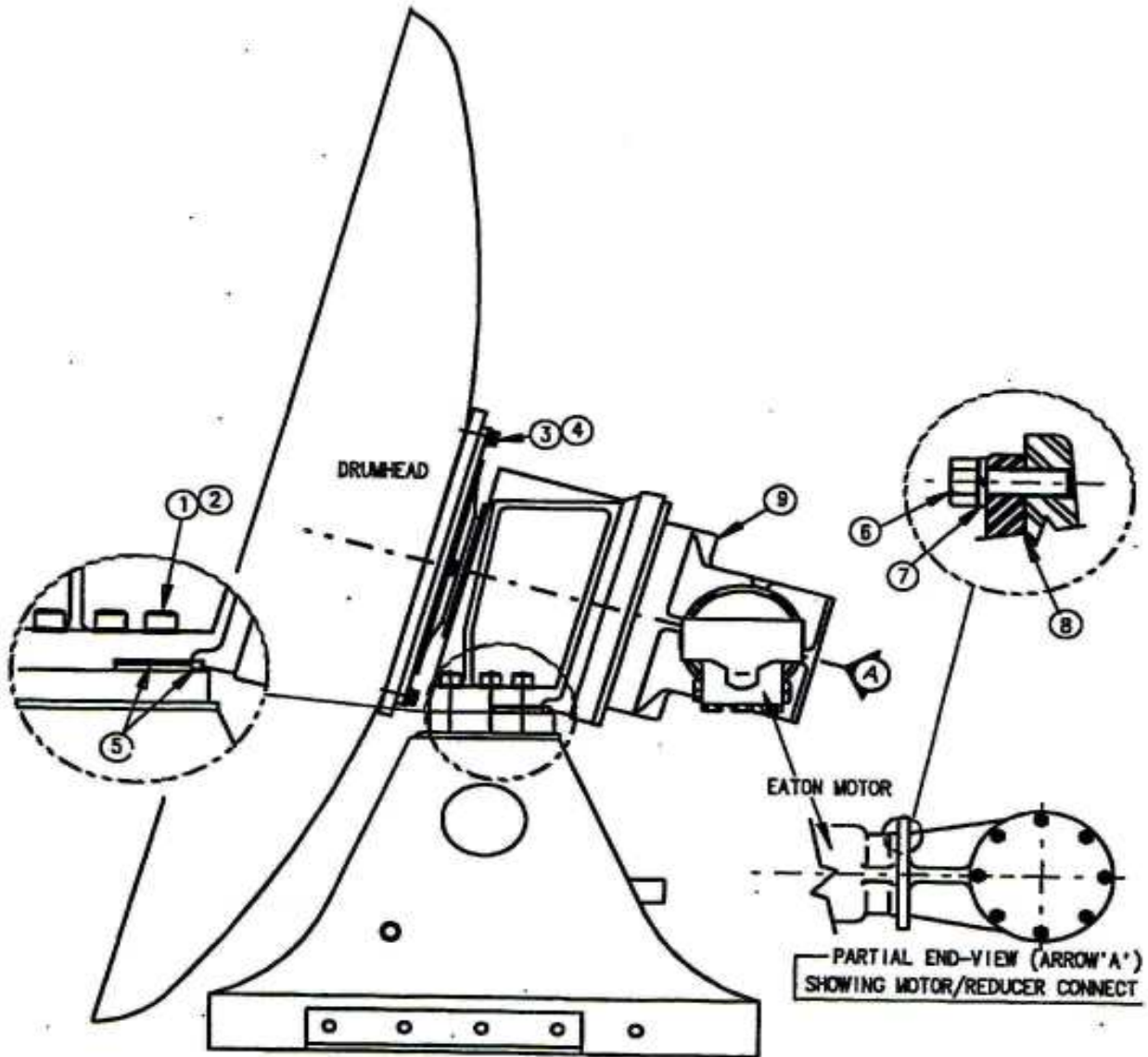
P6001 - SKK



<u>Item#</u>	<u>CMS #</u>	<u>OEM Part#</u>	<u>Description of Part</u>
1	P6000	MD-38139	ZF Front Pedestal with Reservoir
1	P6001	MD-38140	SKK Front Pedestal with Reservoir
2	MA-32763		Reservoir Gasket
3	MB-32764		Reservoir Cover Assy
4	UW3000		3/8" Flat Washer
5	LN3000		3/8" Locknut
7	HH-00102-008		1-1/2" Pipe Cap
8	H1031	HH-0394-001	3/4" Reservoir Site Glass Fitting
9	HH-00038-005		Pipe Plug 3/4" NPT
10	W1045		1-1/4" Full Port Ball Valve
11	HH-00051-007		1-1/4" Close Nipple
12	H1001	MB-38192-00	Filter Assembly 10 Micron
12b	H1028	MM-29738	Vaccum Gauge

London Mixer Parts

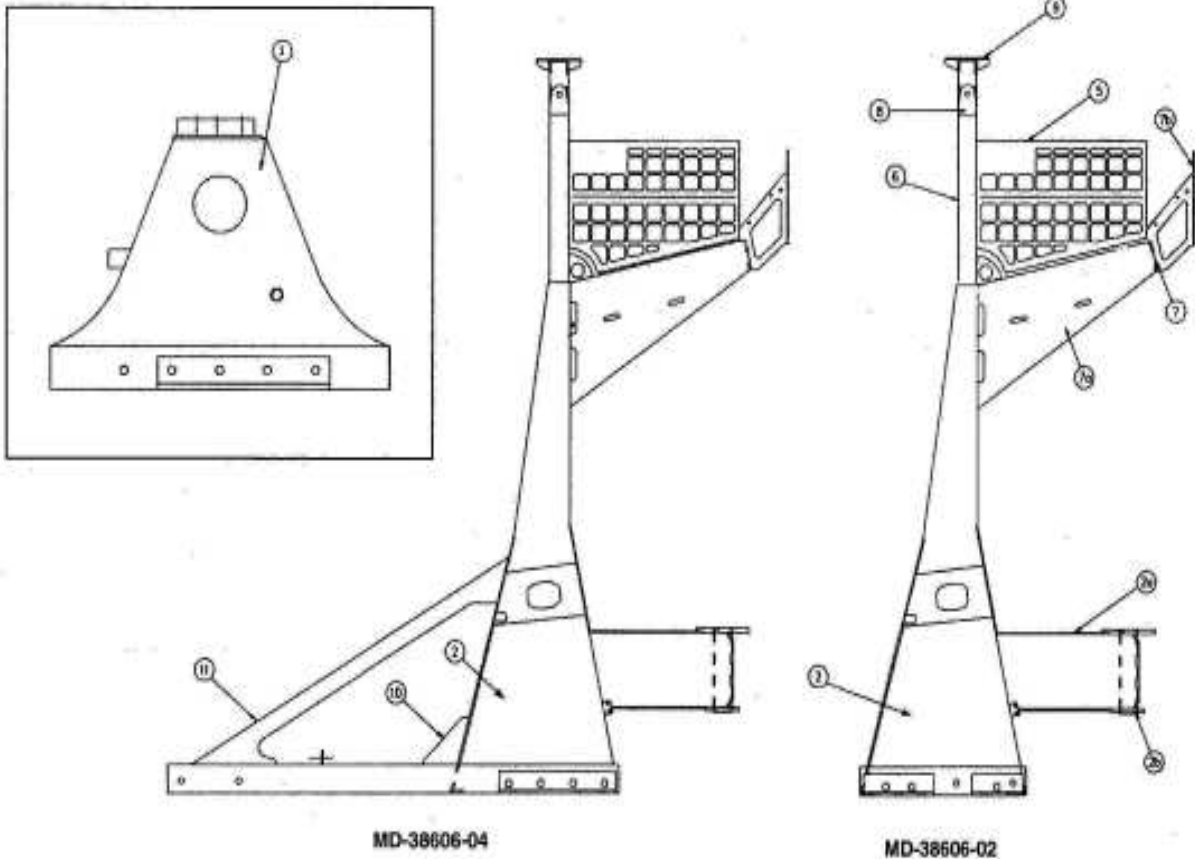
Front Pedestals



<u>Item#</u>	<u>CMS #</u>	<u>Description of Part</u>	<u>Qty</u>
1	B8750	HHCS 7/8-9 x 3-1/4" Gr8	6
2	UW8700	7/8" Hardened Washer	6
3	B7250	HHCS, 5/8-11 x 2-1/2" GR 8	18
4	UW7000	5/8" Hardened Washer	18
5	MA-31879	Stop Block - Square Stock	4
6	HM1000	Metric Bolt m12 x 40mm Gr8	4
7	LW5000	1/2" Lockwasher	4
8	H1014	Motor Gasket	1
9	GBZF7500	ZF Gearbox PK7500	1 or
9	GBZF7300	ZF Gearbox P7300	1

London Mixer Parts

London Paver Rear Pedestal



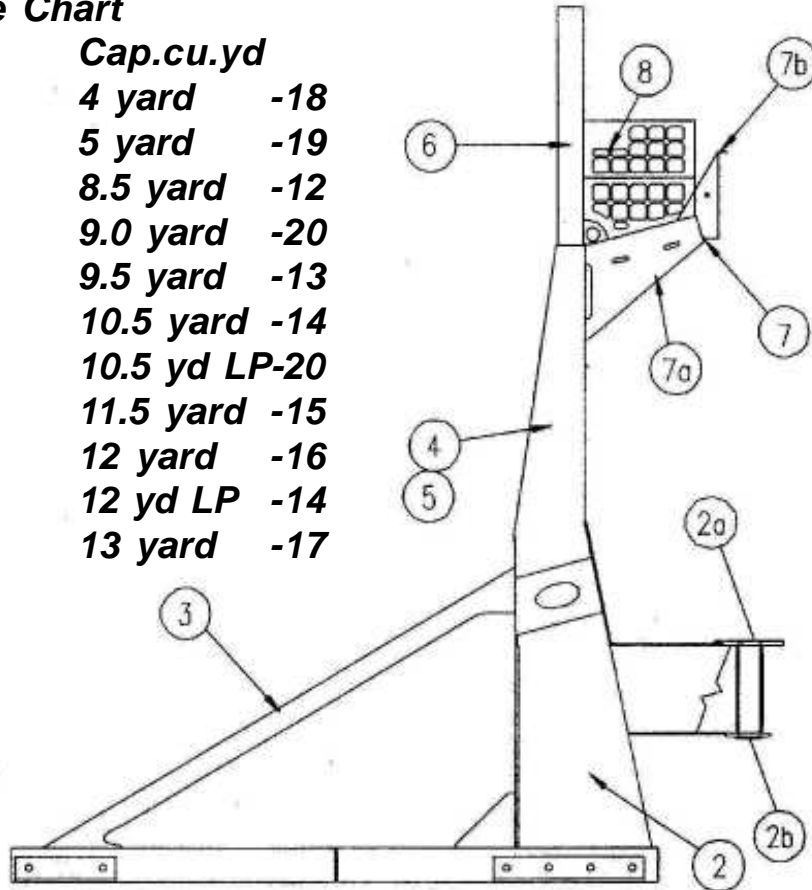
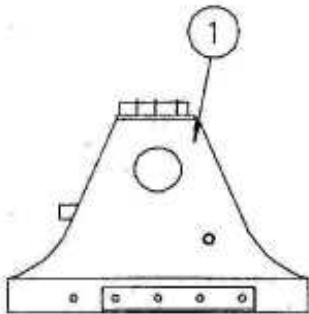
<u>Item#</u>	<u>CMS #</u>	<u>OEM Part#</u>	<u>Description of Part</u>
1	P6000	MD-38139	London Front Pedestal Assy ZF
2	P6002	MD-38606-02	London Rear Pedestal
2	P6003	MD-38606-04	London Rear Pedestal
2	P6003A		London 12 Yard Rear Pedestal
2a	P6004	MB-39297	Support Column Assy - Bushing Tube
2b	P6004A	MA-39299	Lower Plate
3	P6005	MC-38608-01	Upright - RH Side
4	P6006	MC-38608-02	Upright - LH Side
5	P6007	MC-38841	Hopper Guard Assembly
6	P6008	MC-38571	Hopper Mounting Channel
7	P6009	MC-41165	Hopper Support Assembly
7a	P6010	MB-40929	Discharge Hopper Support
7b	P6011	MC-40928	London Logo - Light Bracket
8	P6012	MB-39787	Hopper Lug Weldment 2 pcs required
9	P6013	MC-39782	Bounce Bar Bracket
10	P6014	MB-40919	Gusset - Sway Brace 2 pcs required
11	P6015	MC-40920	Sway Bracing Kit

London Mixer Parts

London Rear Pedestal

Size Chart

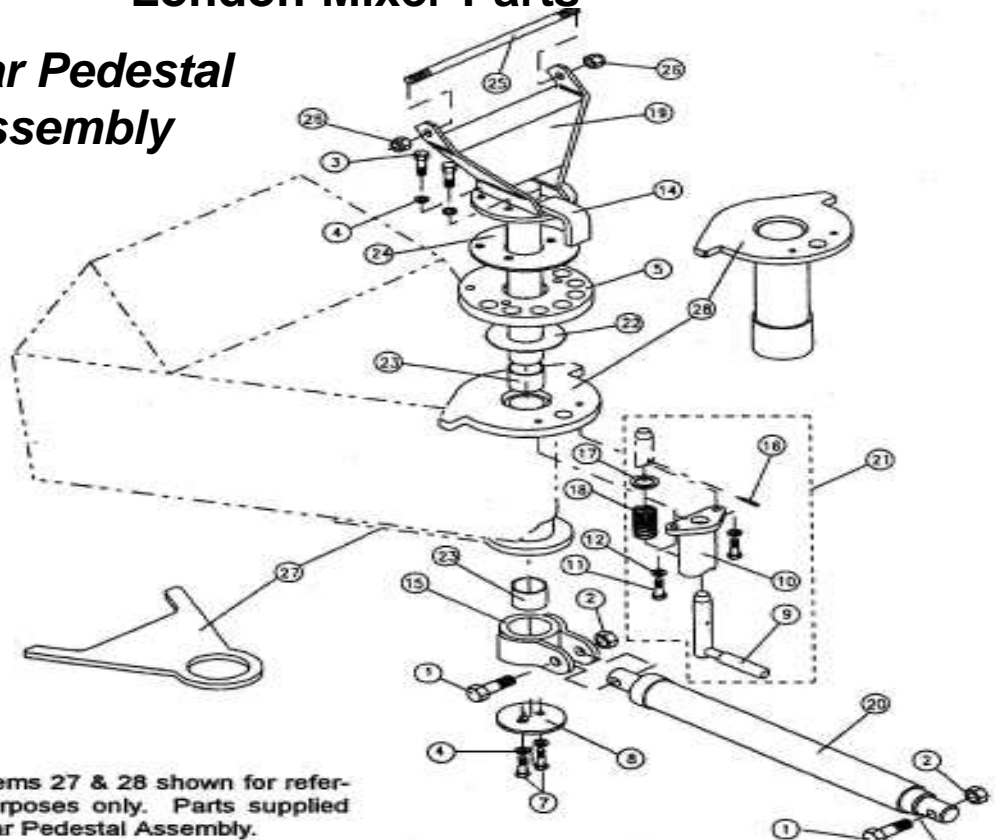
Cap.cu.m	Cap.cu.yd	
3.0 cu.m	4 yard	-18
4.0 cu.m	5 yard	-19
6.0 cu.m	8.5 yard	-12
6.5 cu.m	9.0 yard	-20
7.0 cu.m	9.5 yard	-13
8.0 cu.m	10.5 yard	-14
8.0 cu.m L.P.	10.5 yd LP	-20
8.5 cu.m	11.5 yard	-15
9.0 cu.m	12 yard	-16
9.0 cu.m L.P.	12 yd LP	-14
10.0 cu.m	13 yard	-17



<u>Item#</u>	<u>CMS #</u>	<u>OEM Part#</u>	<u>Description of Part</u>
1	P6000	MD-38139	London Front Pedestal Assy ZF
2	P6030-XX	MC-35810-xx	Rear Pedestal Sub Assembly
2a	P6004	MB-39297	Support Column Assembly
2b	P6004A	MA-39299	Lower Plate
3	P6031	MC-35818	Sway Brace Kit
4	P6032	MC-35817-01	Upright - Driver Side LH
5	P6033	MC-35817-02	Upright - Curb Side RH
6	P6034	MC-35745	Hopper Mounting Channel
7	P6035	MC-41161	Hopper Support Assembly
7a	P6036	MC-36396	Discharge Hopper Support
7b	P6037	MC-35892	London Logo - Light Bracket
8	P6038	MC-39080	Hopper Guard Assembly

London Mixer Parts

London Rear Pedestal Swivel Assembly

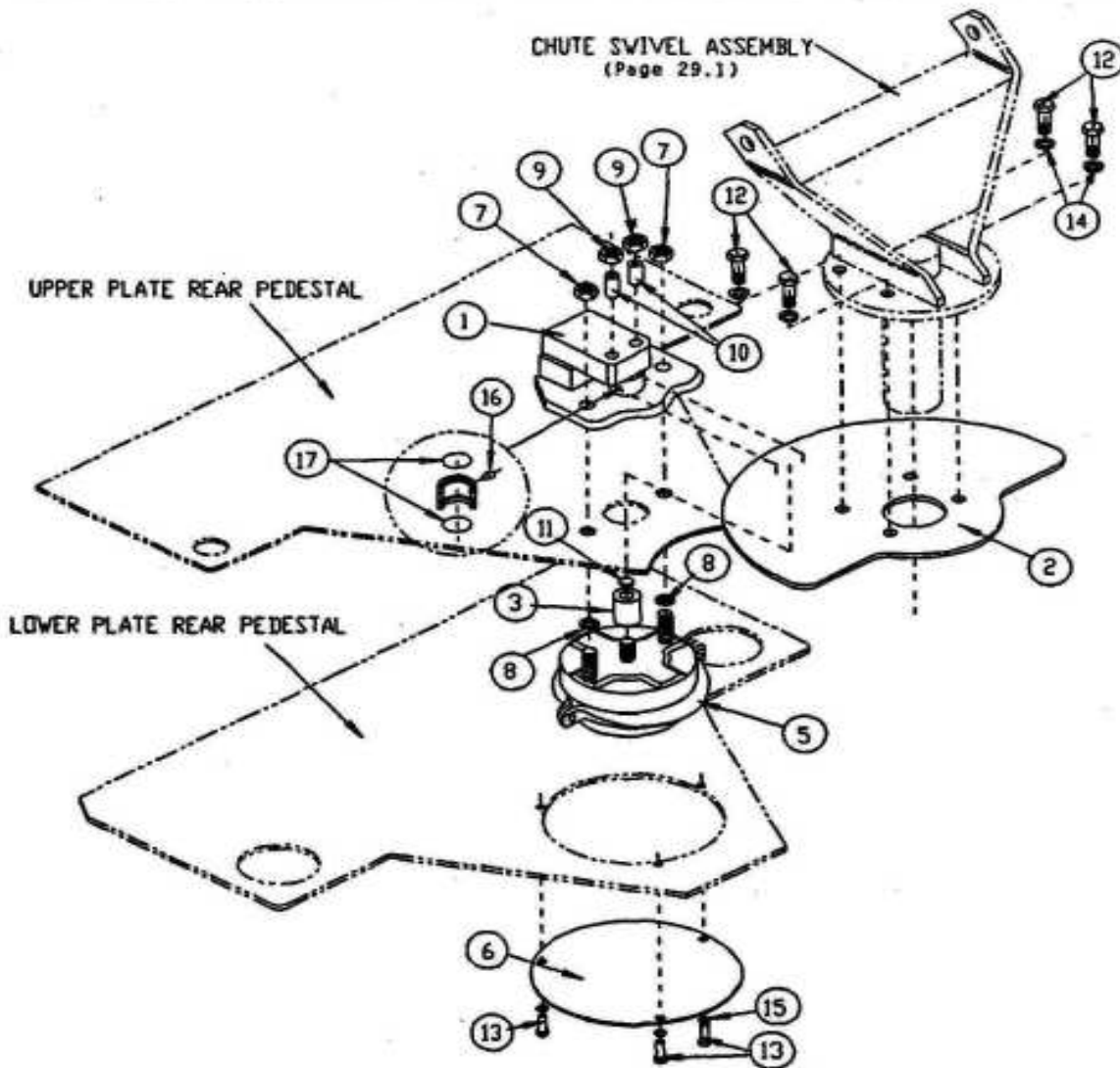


Note: Items 27 & 28 shown for reference purposes only. Parts supplied with Rear Pedestal Assembly.

<u>Item#</u>	<u>CMS #</u>	<u>OEM Part#</u>	<u>Description of Part</u>	<u>Qty</u>
1	B8350	HH-00293-153	Hex Head Bolt 3/4-10 x 3-1/2 Gr 8	2
2	LN8000	HH-00340-006	Locknut, 3/4-10	2
3	B5150 A	HH-00972-090	Hex Head Bolt 1/2-20 x 1-1/2	4
4	LW5000	HH-00457-001	Lockwasher, 1/2"	4
5	MC-33336	MC-33336	Swivel Bearing Plate	1
6	HW9262	HH-00232-001	1/4-28 Straight Grease Fitting	1
7	B5100	HH-00293-088	Hex Head Screw, 1/2-13 x 1"	2
8	C1024	MA-32775	Keeper Plate	1
9	C1015	MA-32774	Latch Handle	1
10	C1019A	MB-32773	Chute Lock Housing	1
11	B3100	HH-00293-049	Hex Head Screw, 3/8-16 x 1"	2
12	LW3000	HH-00457-004	Lockwasher, 3/8"	2
15	C1029A	MC-32617	Chute Cylinder Clevis	1
16	C1017	HH-00104-012	Roll Pin	1
17	C1016	MA-35958	Flat Washer	1
18	C1014	MA-32753	Latch Spring	1
19	C6000	MC-38646	London Swivel Assembly	1
20	CY6000	MB-37793	Hydraulic Cylinder Standard	1
20	CY6001	MB-38576	Hydraulic Cylinder Paver	1
21	C1019	MB-35571	Chute Lock Assy	1
22	MA-39262	MA-39262	Thrust Washer	1
23	C1033	MA-39263	Bushing - Swivel Bearing	2
24	MA-39301	MA-39301	Spacer Plate	1
25	C1003	HH-00081-106	Main Chute Pin	1

London Mixer Parts

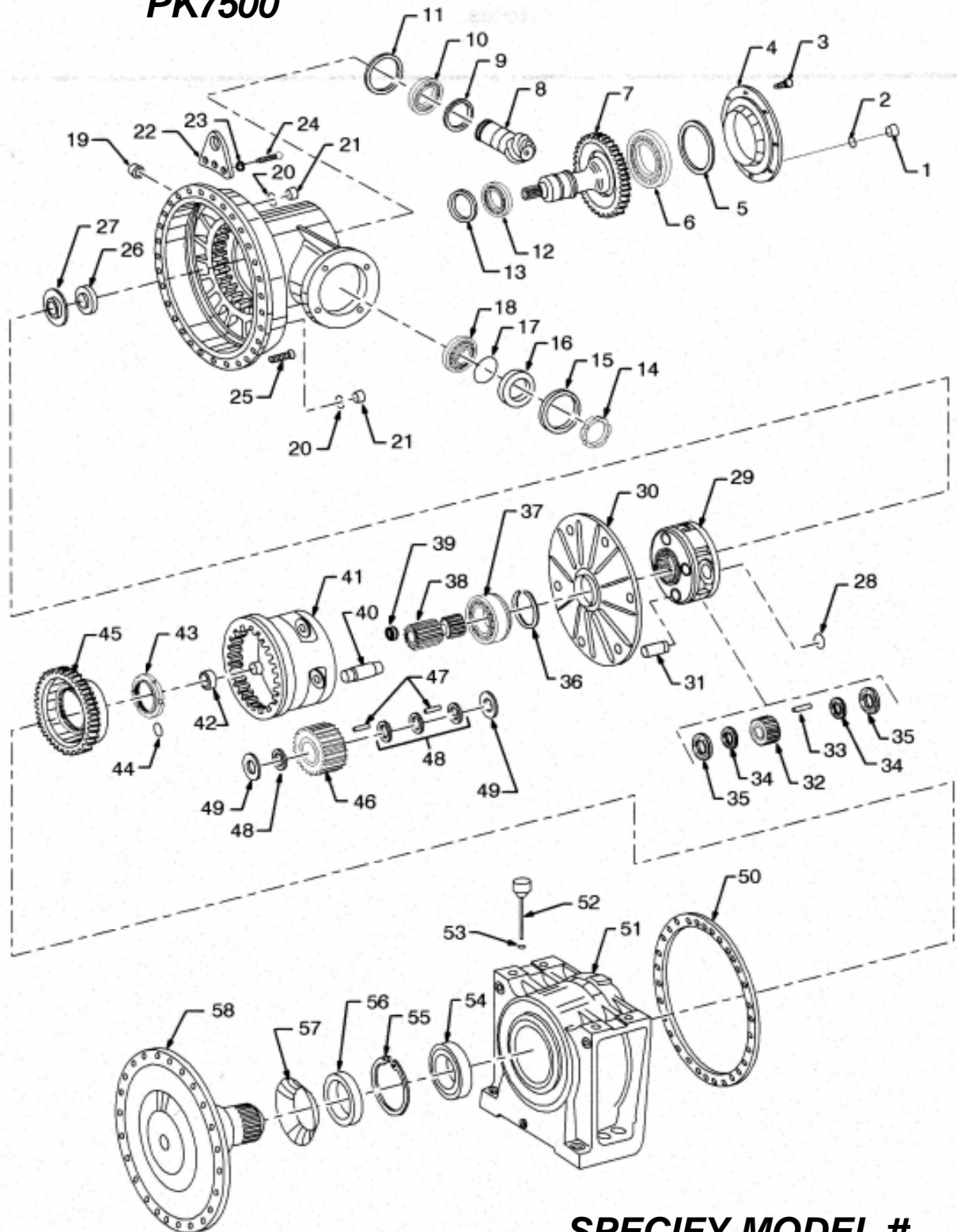
London Rear Pedestal Chute Positioner Assv



<u>Item#</u>	<u>CMS #</u>	<u>OEM Part#</u>	<u>Description of Part</u>	<u>Qty</u>
1	MB-37849	MB-37849	Caliper Weldment	1
2	MC-37833	MC-37833	Caliper Disc	1
3	MA-37847	MA-37847	Piston	1
5	MA-37861	MA-37861	Air Brake Actuator	1
17	HH-00116-055	HH-00116-055	Oring	2

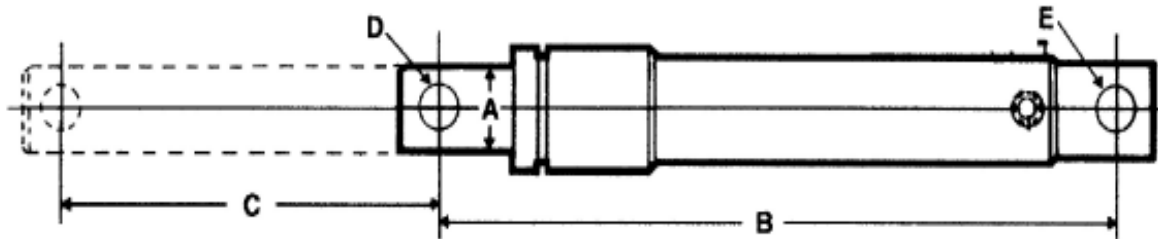
London Mixer Parts

ZF GEARBOX PK7500



**SPECIFY MODEL #
WHEN QUOTING PARTS**

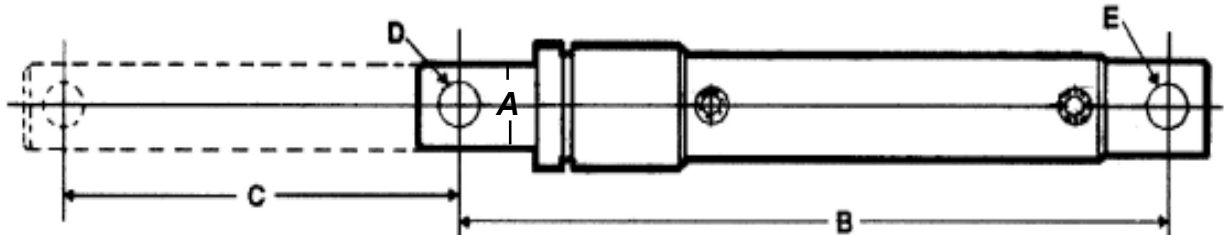
London Mixer Parts Chute Lift Cylinders



SINGLE ACTING CYLINDERS

<u>CMS #</u>	<u>OEM #</u>	<u>Style</u>	<u>A</u>	<u>B</u>	<u>C</u>	<u>D</u>	<u>E</u>
CY 1000	WM2025 000	MTM/ Smith	2"	25.5"	18"	3/4"	3/4"
CY 1001	102-7530-01	REX	1 1/2"	25.5"	19.5"	1"	3/4"
CY 1002	102-10174-01	REX	2"	25.72"	18.5"	1"	3/4"
CY 1002A	102-50362-01	REX	2"	28-1/4"	20"	3/4"	3/4"
CY 1003	CS-200-20	CCB	2"	29"	20"	3/4"	3/4" Forked
CY 1004	200.107625	MTM	2 1/2"	25.5"	16"	3/4"	3/4"
CY 1004 A	200.107615	MTM	2 1/2"	25"	16"	7/8"	7/8"
CY 1010	43878000	Smith	2 1/2"	25"	16"	3/4"	3/4"

London Mixer Parts Chute Lift Cylinders

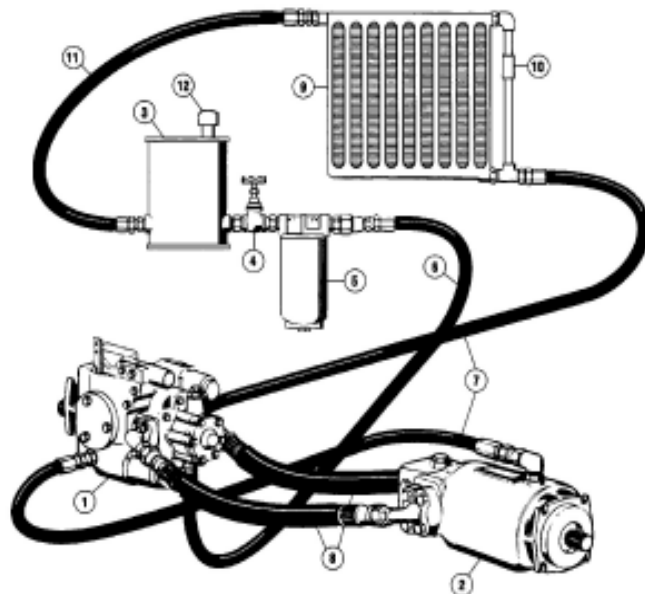
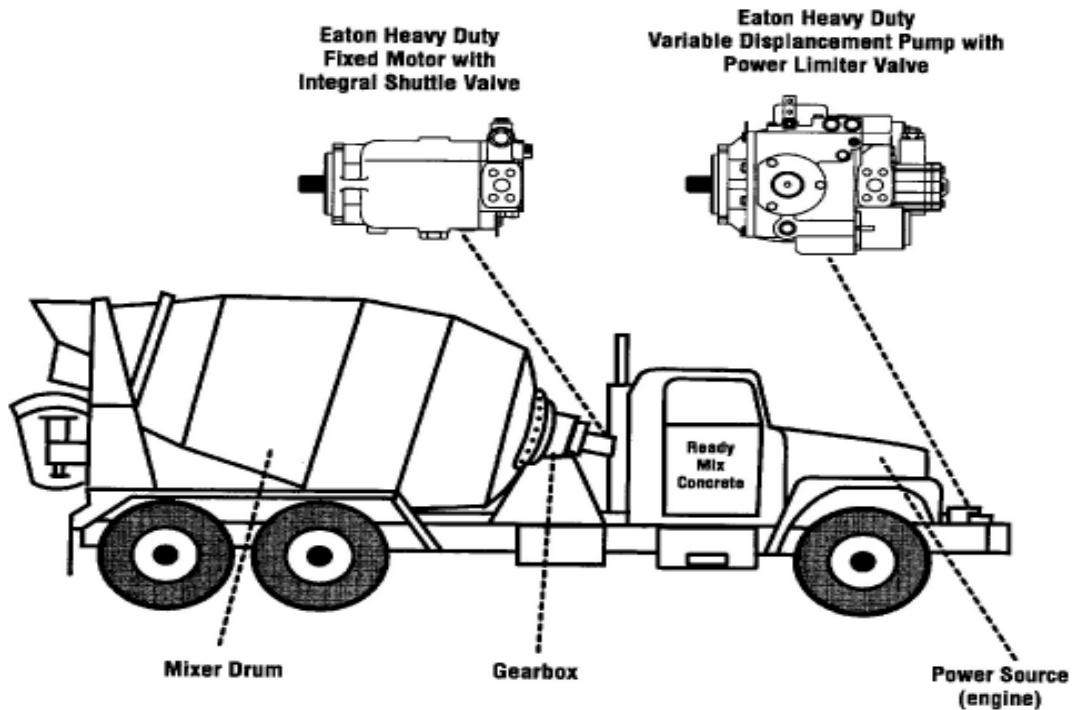


DOUBLE ACTING CYLINDERS

<u>CMS #</u>	<u>OEM #</u>	<u>Description</u>	<u>A</u>	<u>B</u>	<u>C</u>	<u>D</u>	<u>E</u>
CY 1012	43879000	Smith	2 1/2"	25.5"	16"	3/4"	3/4"
CY 1006	200.107595	MTM	2 1/2"	25"	16"	3/4"	3/4"
CY 1006 A	200.1077596	MTM	2 1/2"	25"	15.25"	7/8"	7/8"
CY 1008	2BH140	Oshkosh Chute Folddown Cylinder					
CY38576	MB-38576	London	2 1/2	25-1/2	18"	3/4"	3/4"

London Mixer Parts

Eaton Pumps & Motors



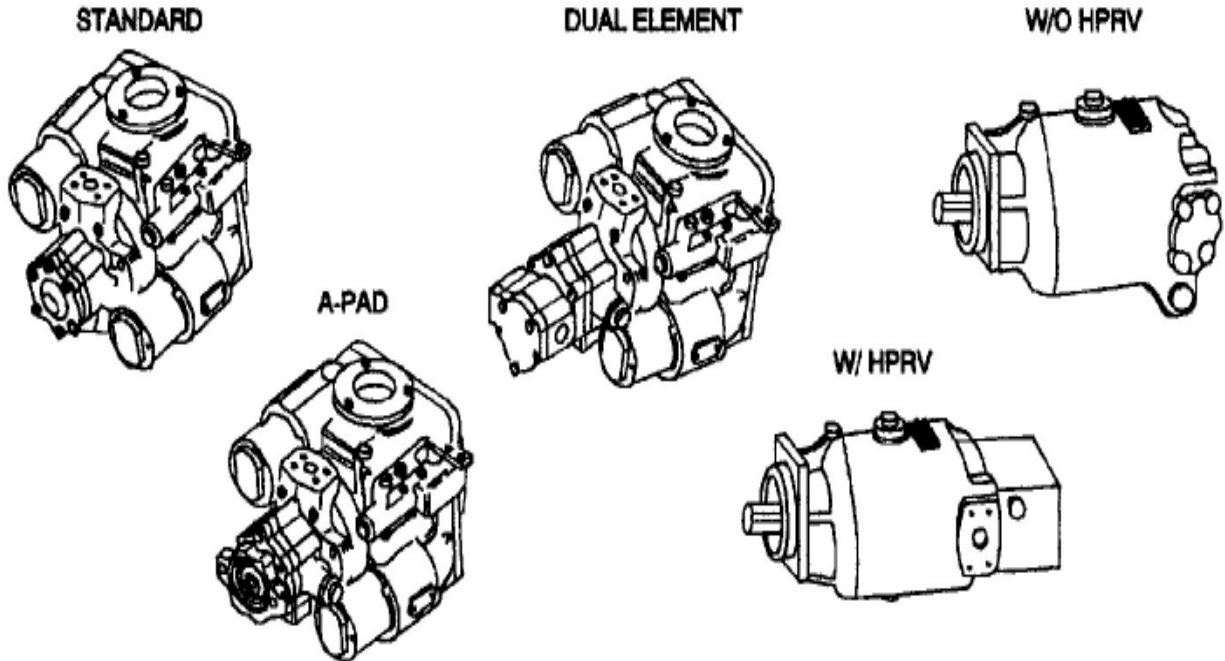
Typical Hydrostatic System

1. Variable Displacement Pump
2. Fixed Displacement Motor
3. Oil Reservoir
4. Shut Off Valve
5. Suction Filter with out by pass valve
6. Charge Pump Inlet Hose
7. Pump & Motor Case Drain Hoses
8. High Pressure Hoses
9. Heat Exchanger (Cooler)
10. Heat Exchange By-Pass Valve
11. Reservoir Return Hose
12. Reservoir Fill Cap & Breather

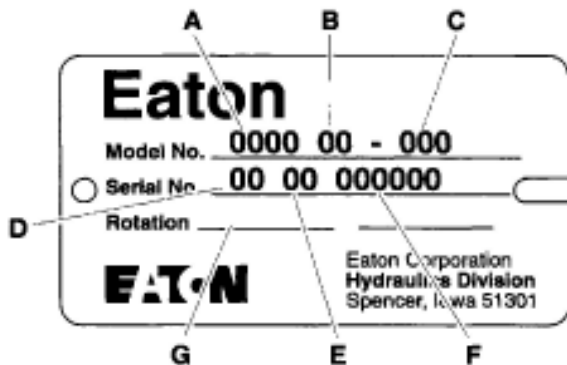
London Mixer Parts

Eaton Pumps & Motors

EATON HYDRAULICS



Suggestion: When replacing either the pump or motor, it is recommended that both units be changed out and the hydraulic system flushed to clean the hoses, filter & reservoir of any contaminants

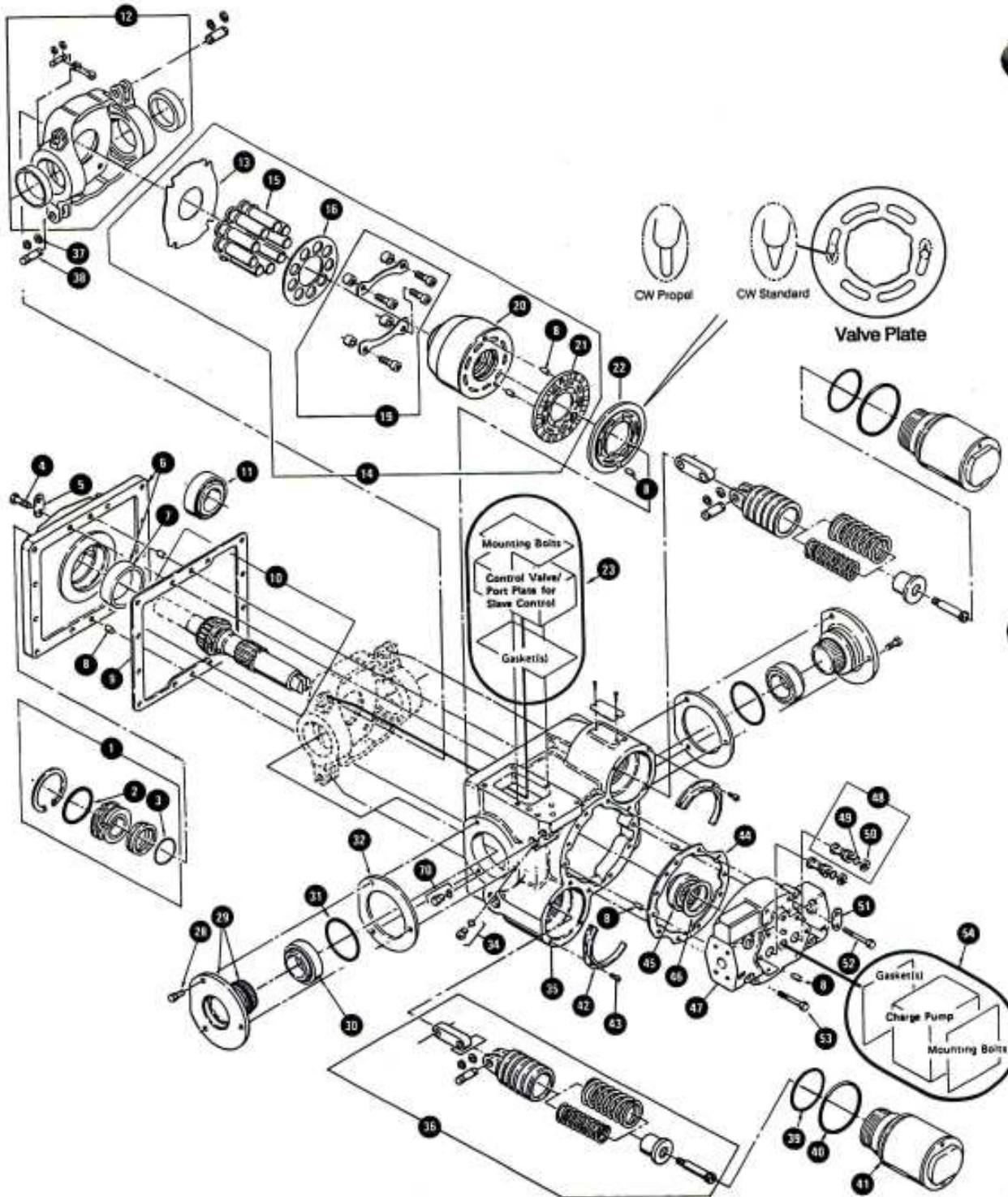


When ordering or requesting quote information on pump and motors, it is important that you have the Pump or Motor Model and Serial #s. There are a lot of variable options that have been used in the mixer industry. So to ensure you get exactly the same units or parts for your repair job check these number first.

London Mixer Parts

Eaton Pumps & Motors

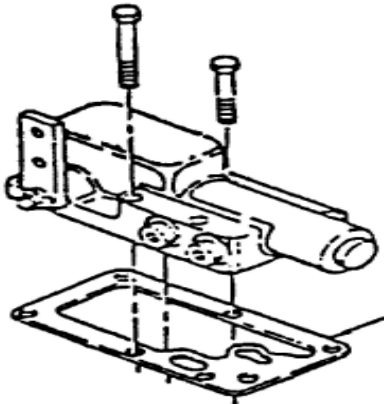
Exploded View Drawing



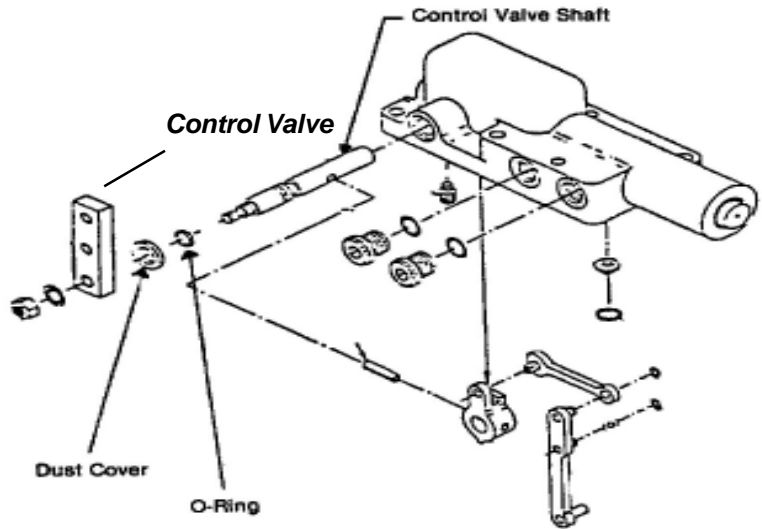
London Mixer Parts

Eaton Pumps & Motors

EATON HYDRAULICS



Eaton Manual Control Valve &



EATON REPAIR PARTS STOCKED BY CMS.Com FOR QUICK DELIVERY

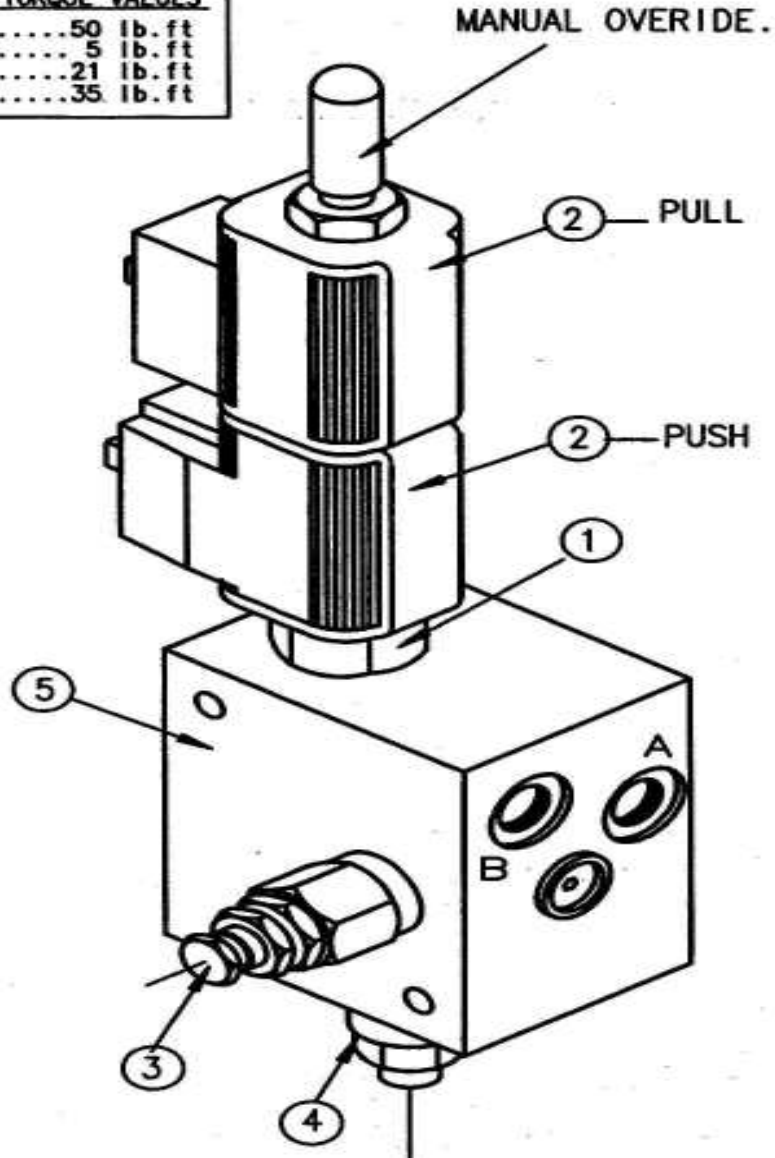
<u>CMS#</u>	<u>OEM Part#</u>	<u>Description of Part</u>
H 1040	8137000	Eaton Chute Pump (Apad Mount)
HP 1003	990064-022	Eaton Manual Control Valve Rebuilt
H 1016	104306	Eaton Manual Control Valve Shaft
H 1026	101594	Control Valve Lever
H 1026 A	02421	Control Valve Lever
HP 1005	02463	Charge Pump Shaft (Non Apad)
HP 1006	02471	Charge Pump Shaft (Apad)
H 1045	101137	Woodruff Key
HP 1007	1690920	Charge Pump Gasket
HP 1008	990029	Motor Block Seal Kit
H 1022	990231	Pump & Motor Shaft Seal Kit



London Mixer Parts

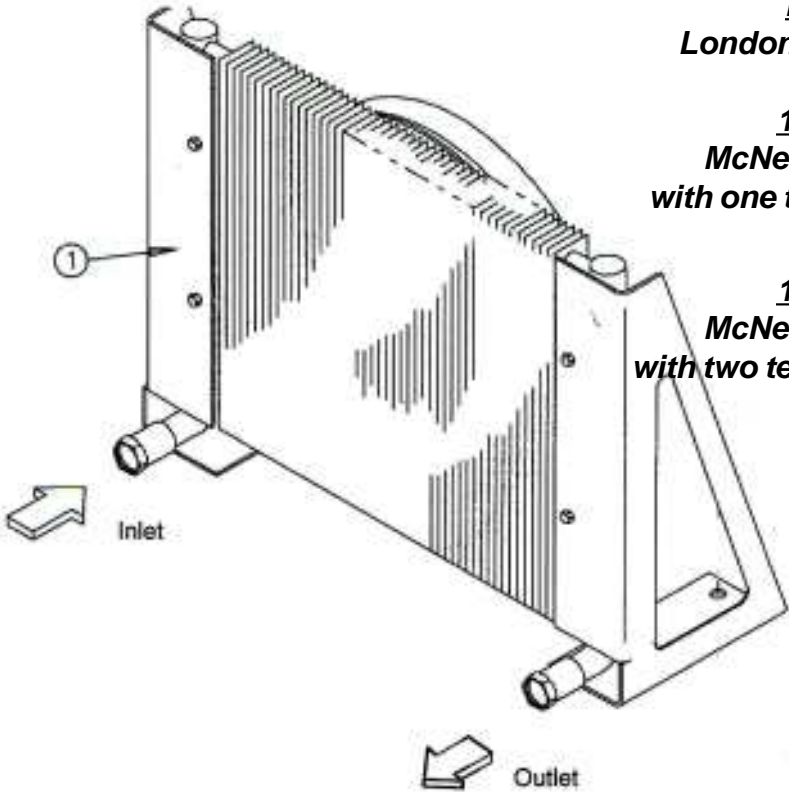
**London Chute Lift Valve
MA-37729**

ASSEMBLY TORQUE VALUES	
Item 1.....	50 lb.ft
Item 2.....	5 lb.ft
Item 3.....	21 lb.ft
Item 4.....	35 lb.ft



<u>Item</u>	<u>CMS#</u>	<u>Description of Part</u>
1	GS045710N	3/4 Way Solenoid Valve
2	CAP012D	12v DC Coil
3	E2B020ZN	Load Control Valve
4	A5A020ZN	Relief Valve
5	9S000170B	Manifold Block
N/S	VSAD-N1-3M	London Solenoid Electrical Connectors

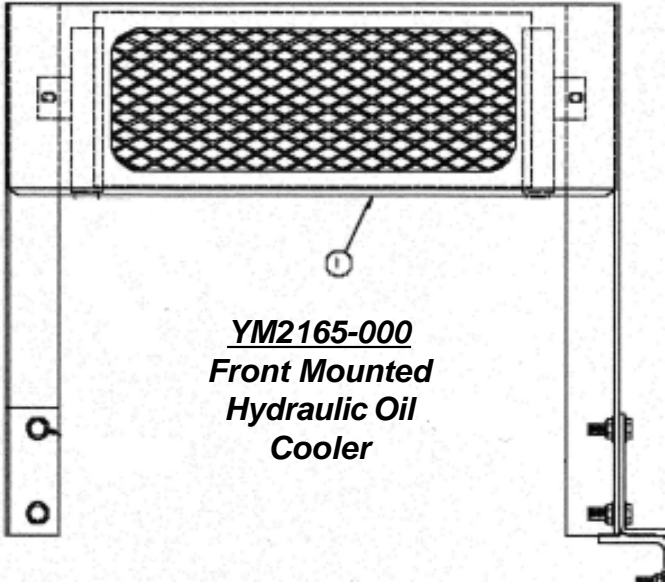
London Mixer Parts



MA-39460
London Heat Exchanger

160.106575
McNeilus Fan Cooler
with one temperature switch

160.108575
McNeilus Fan Cooler
with two temperature switches

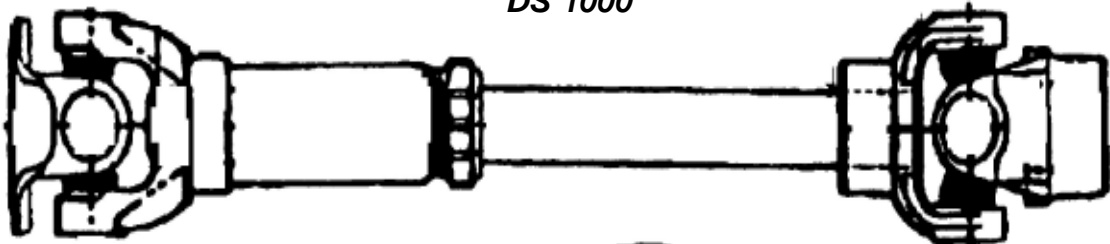


YM2165-000
Front Mounted
Hydraulic Oil
Cooler

London Mixer Parts

Eaton Pumps & Motors

Universal Drive Shaft
DS 1000



Drive Flange 1310
DS 1000 A



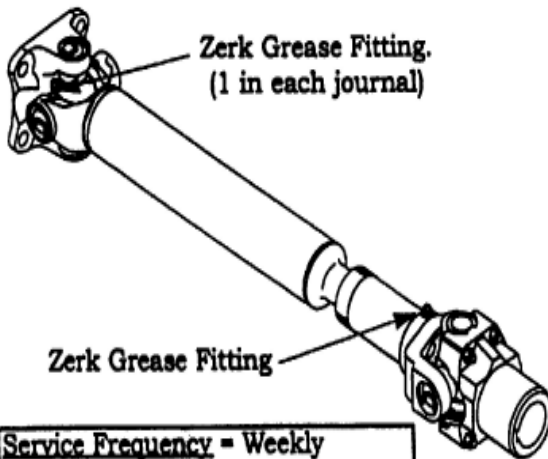
U Bolt Kit
DS 1001



Pump End Yoke 1310
H 1046 1-3/8 Tapered
H 1046 A 1-1/2" Tapered

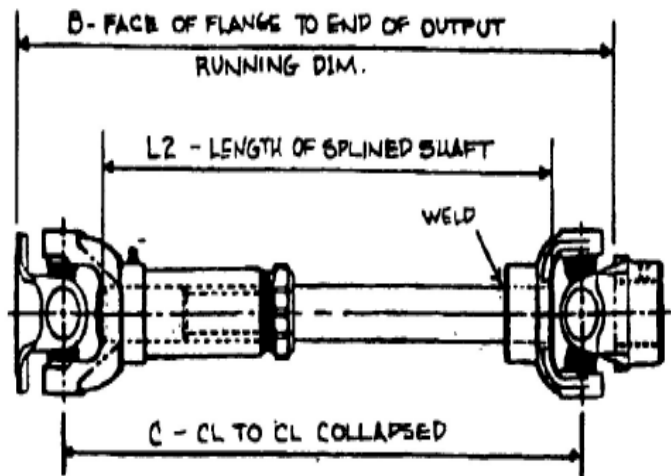


Universal Kit
DS 1000 B



Service Frequency = Weekly

**PUMP
DRIVE LINE**



London Mixer Parts

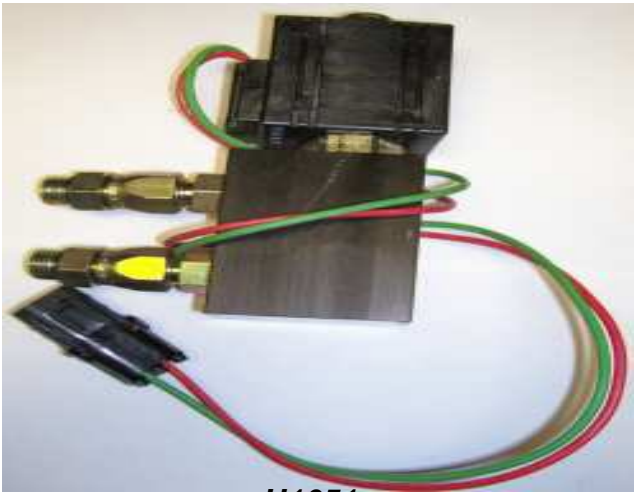
Hydraulic Parts



**H1027-ASSY
SLUMP METER ASSY**



H1028 VACCUM GAUGE



**H1051
PAUSE/RESUME VALVE ASSY**



**H1031 3/4" SITE GLASS
H1030 1" SITE GLASS**



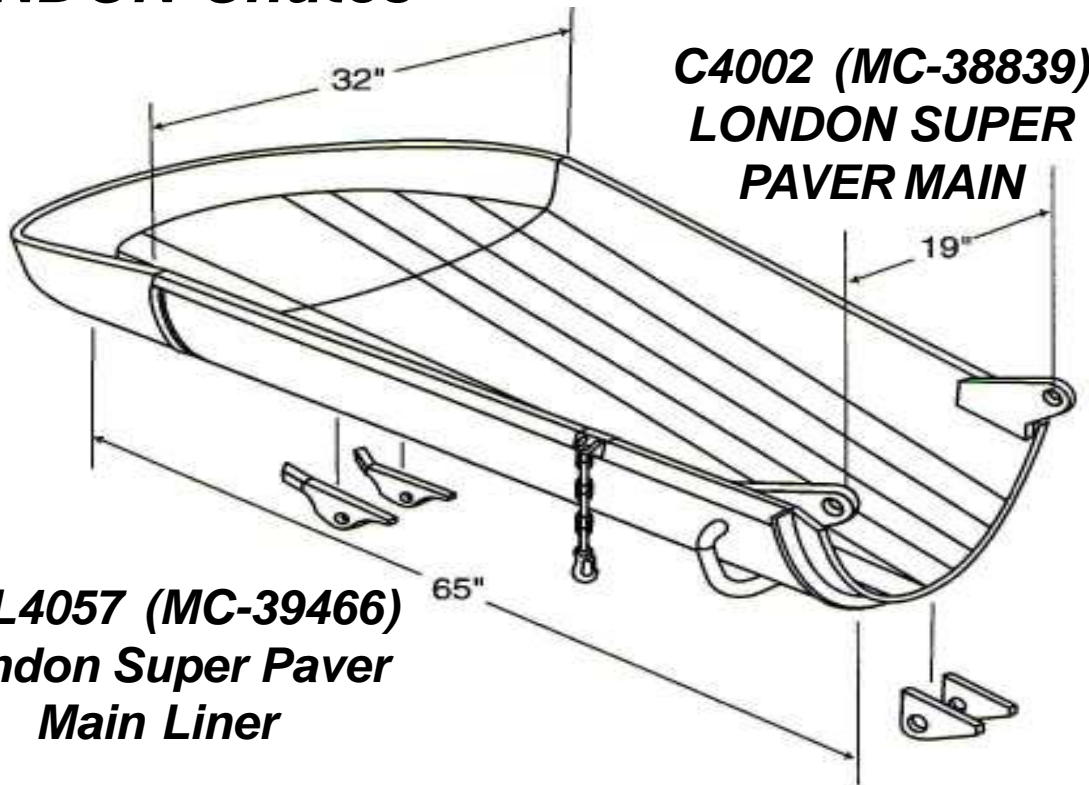
HYDRAULICS CHUTE BLOCK ASSY



H1011 RESERVIOR COVER

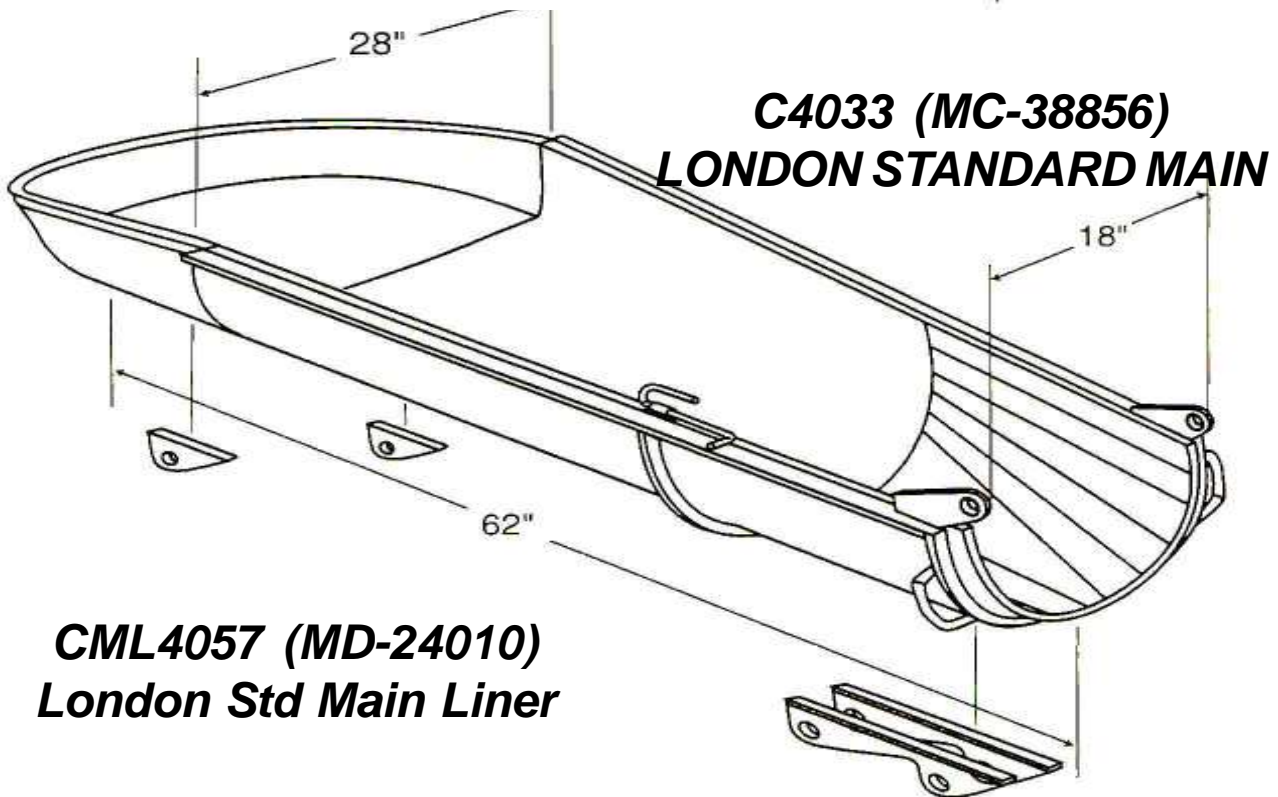
London Mixer Parts

LONDON Chutes



**C4002 (MC-38839)
LONDON SUPER
PAVER MAIN**

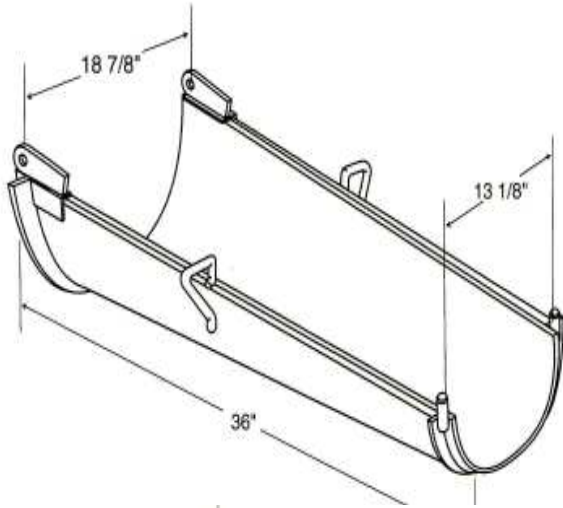
**CML4057 (MC-39466)
London Super Paver
Main Liner**



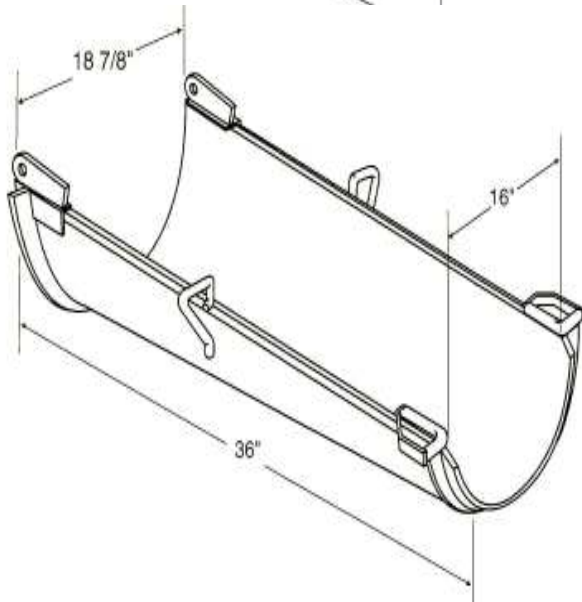
**C4033 (MC-38856)
LONDON STANDARD MAIN**

**CML4057 (MD-24010)
London Std Main Liner**

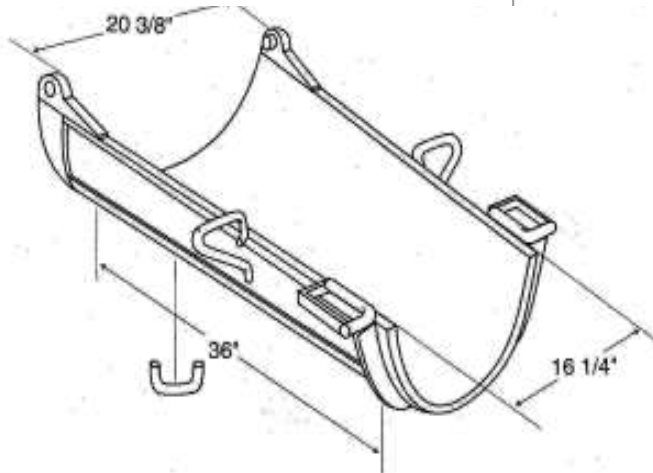
London Mixer Parts
LONDON Chutes



C3011 (MC-24544)
LONDON STANDARD
FOLDOVER
FOL3058 Foldover Liner



C3011P (MC-29102)
LONDON PAVER
FOLDOVER



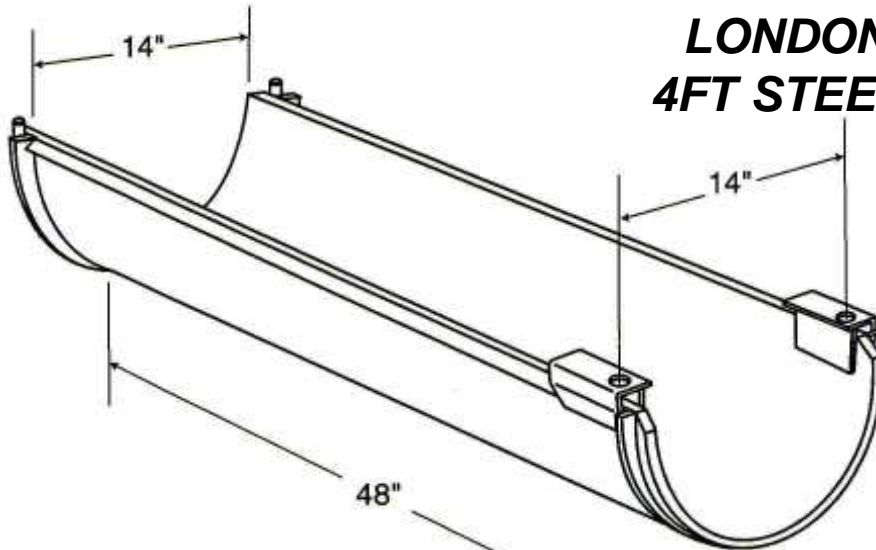
C3011T (MC-37822)
TRANSITION FOLDOVER
LONDON MAIN TO
McNEILUS EXTENSION
FOL3058 Foldover Liner

C3018 (MC-38974)
LONDON PAVER
TRANSITION
FOLDOVER
FOL3052 Foldover Liner

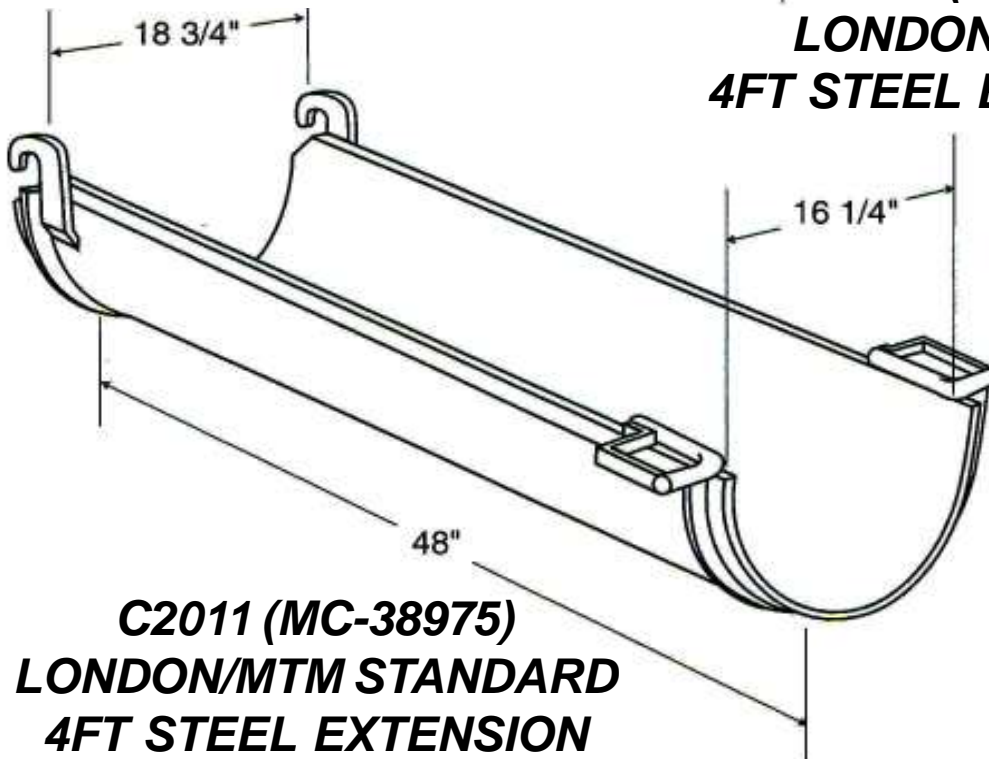
London Mixer Parts

LONDON Chutes

**C2025 (MC-22473)
LONDON STANDARD
4FT STEEL EXTENSION**



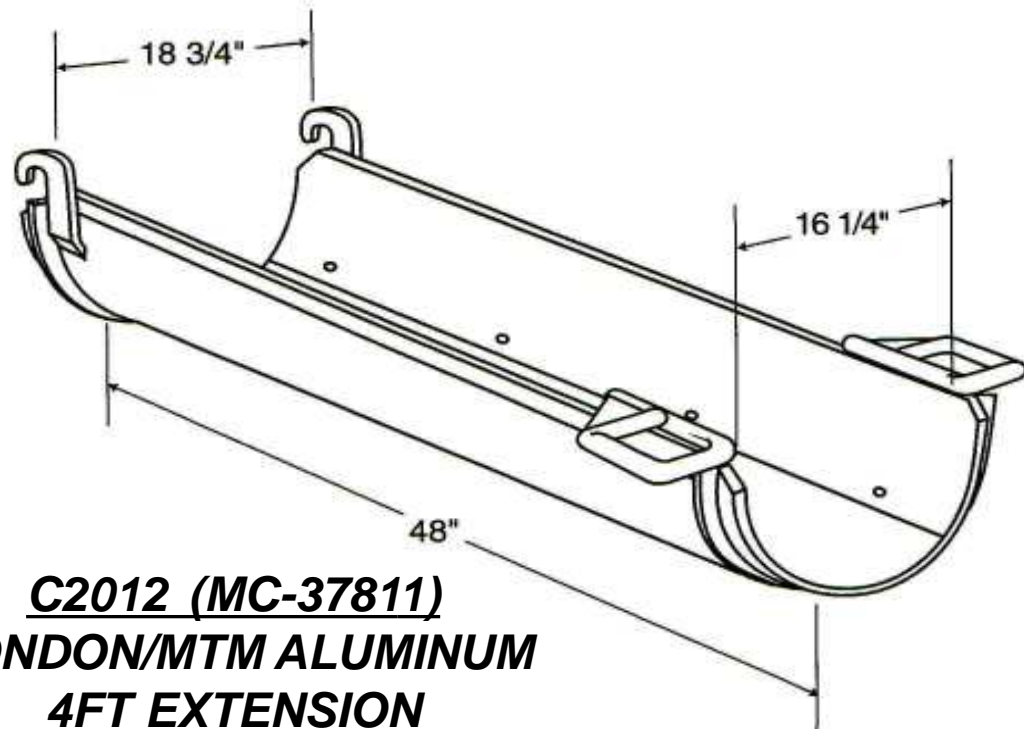
**C2025P (MC-29105)
LONDON PAVER
4FT STEEL EXTENSION**



**C2011 (MC-38975)
LONDON/MTM STANDARD
4FT STEEL EXTENSION**

London Mixer Parts

LONDON Chutes



C2012 (MC-37811)

**LONDON/MTM ALUMINUM
4FT EXTENSION**

C2012B

**LONDON/MTM ALUMINUM
4FT EXTENSION
With PVC LINER**

C2012C

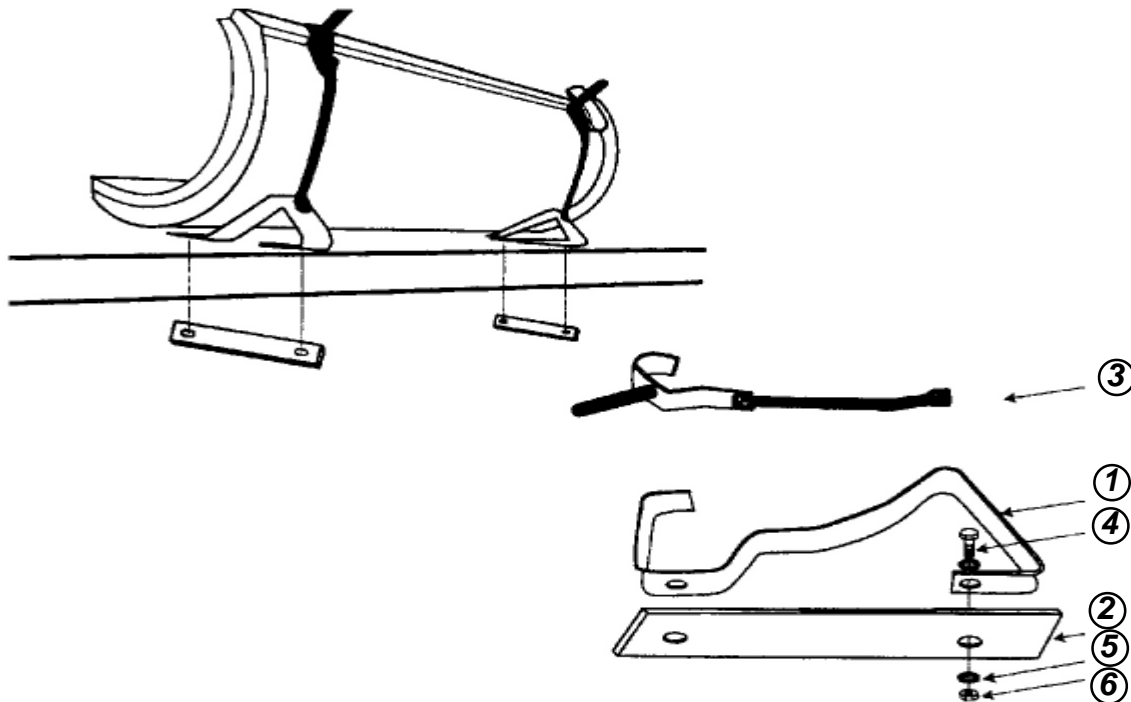
**LONDON/MTM ALUMINUM
4FT EXTENSION
With 1/8" ALUMINUM LINER**

C2012D (MC-38686)

**LONDON/MTM ALUMINUM
4FT EXTENSION
With 1/8" STEEL LINER**

London Mixer Parts Chute Accessories

Fender Mounted



<u>Item #</u>	<u>CMS #</u>	<u>OEM Part#</u>	<u>Description of Part</u>	<u>Qty</u>
1	C 1035	82368	Chute Fender Mounting Bracket	2
1	C 1035 B	3244000	Chute Fender Bracket-Old Smith/London	
1	C 1035 C	3244002	Chute Fender Bracket Smith Paver Brkt	
2	C 1035 A	0178000	Spacer Bar	2
3	C 1002 ASSY	780.82629	Chute Holddown Strap Assembly	2
3	C 1000	020.82650	Plastic Chute Holddown (Only)	
3	C 1000 A	5040845	Aluminum Cast Chute Holddown (Only)	
3	C 1001	120.82654	10" Rubber Bungy Strap	
3	C 1001 A	120.82658	15" Rubber Bungy Strap	
3	C 1001 B		31" Rubber Bungy Strap	
4	B 5175		1/2-13 x 1-3/4" Hex Bolt	4
5	UW 5000		1/2" Washer	8
6	LN 5000		1/2" Locknut	4

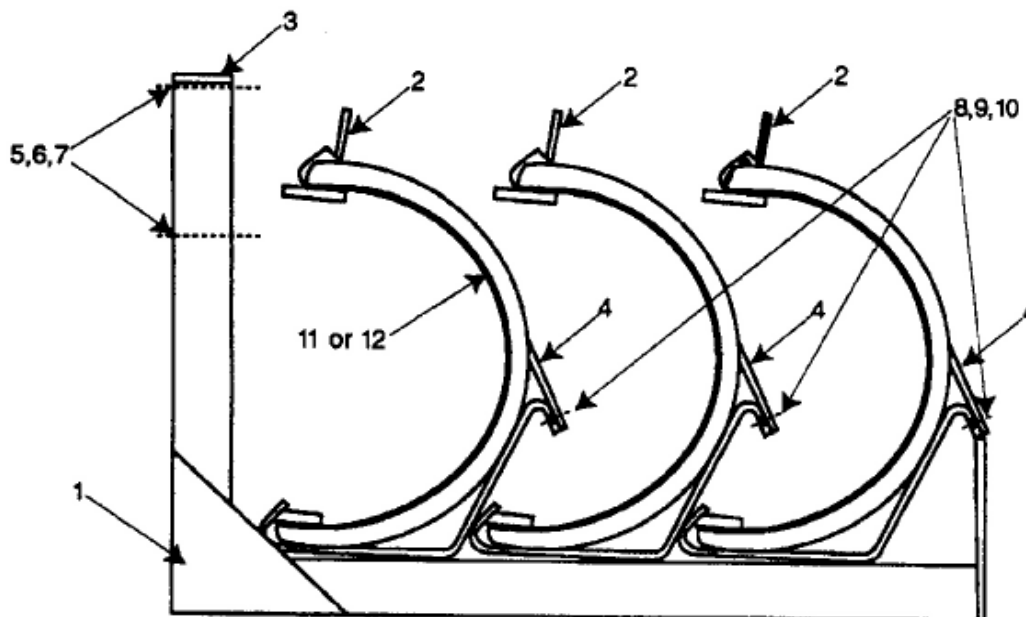
London Mixer Parts

Chute Accessories

Frame mounted "L" Brackets



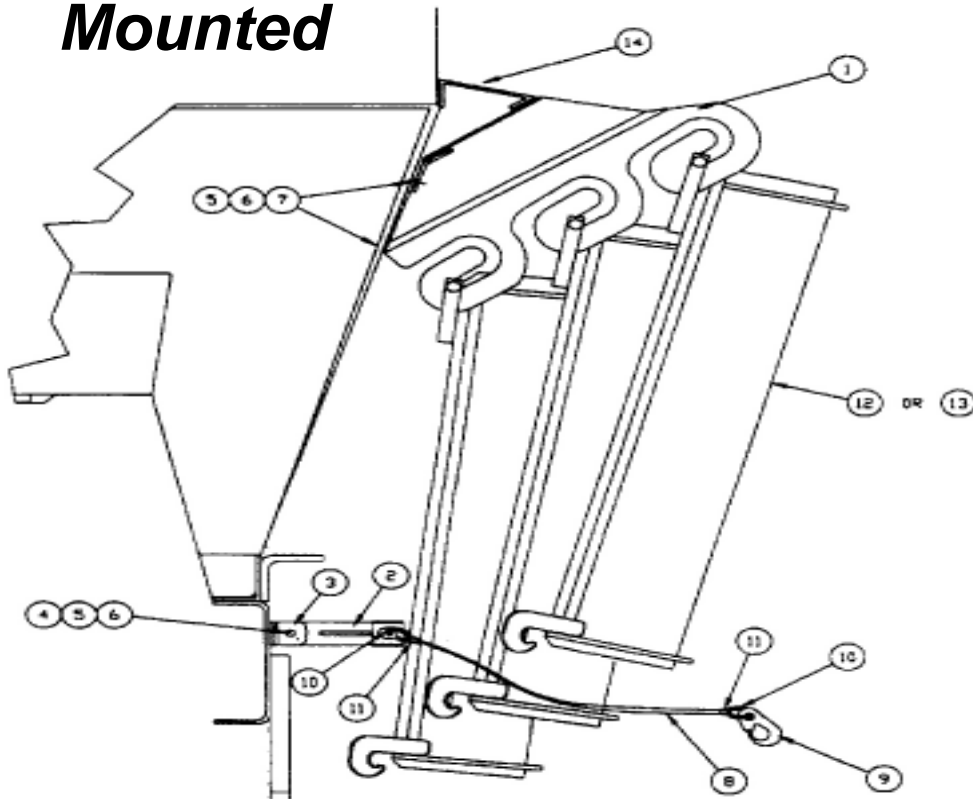
C 1002 ASSY
Chute Hold Down Assy



<u>Item #</u>	<u>CMS #</u>	<u>OEM Part#</u>	<u>Description of Part</u>	<u>Qty</u>
1	C 1021	43864000	Chute Bracket Side Mount	2
1	C 1053	660-010073	London "22473" 3 Piece L-Brkt Assy	2
2	C1000	15446005	Plastic Holddown Handle (Only)	6
	C 1002 ASSY	780.82629	Chute Holddown Strap Assembly	2
2	C 1000 A	5040845	Aluminum Cast Chute Holddown (Only)	
3		CRA101CAP	Plastic End Cap	2
4	C 1001	120.82654	10" Rubber Bungy Strap	6
4	C 1001 A	120.82658	15" Rubber Bungy Strap	6
4	C 1001 B		31" Rubber Bungy Strap	6
5	LN 7000		5/8-11 Locknut	4
6	UW 7000		5/8" Washer	8
7	B 7400		5/8-11 x 4" Hex Bolt Gr8	4
8	LN 1000		1/4-20 Locknut	12
9	UW 1000		1/4" Washer	24
10	B 1125		1/4-20 x 1-1/4" Hex Bolt	12
11	C 2010	440.151650	MTM - Smith Extension Chute	3
12	C 2012		MTM - Smith Aluminum Ext Chute	3

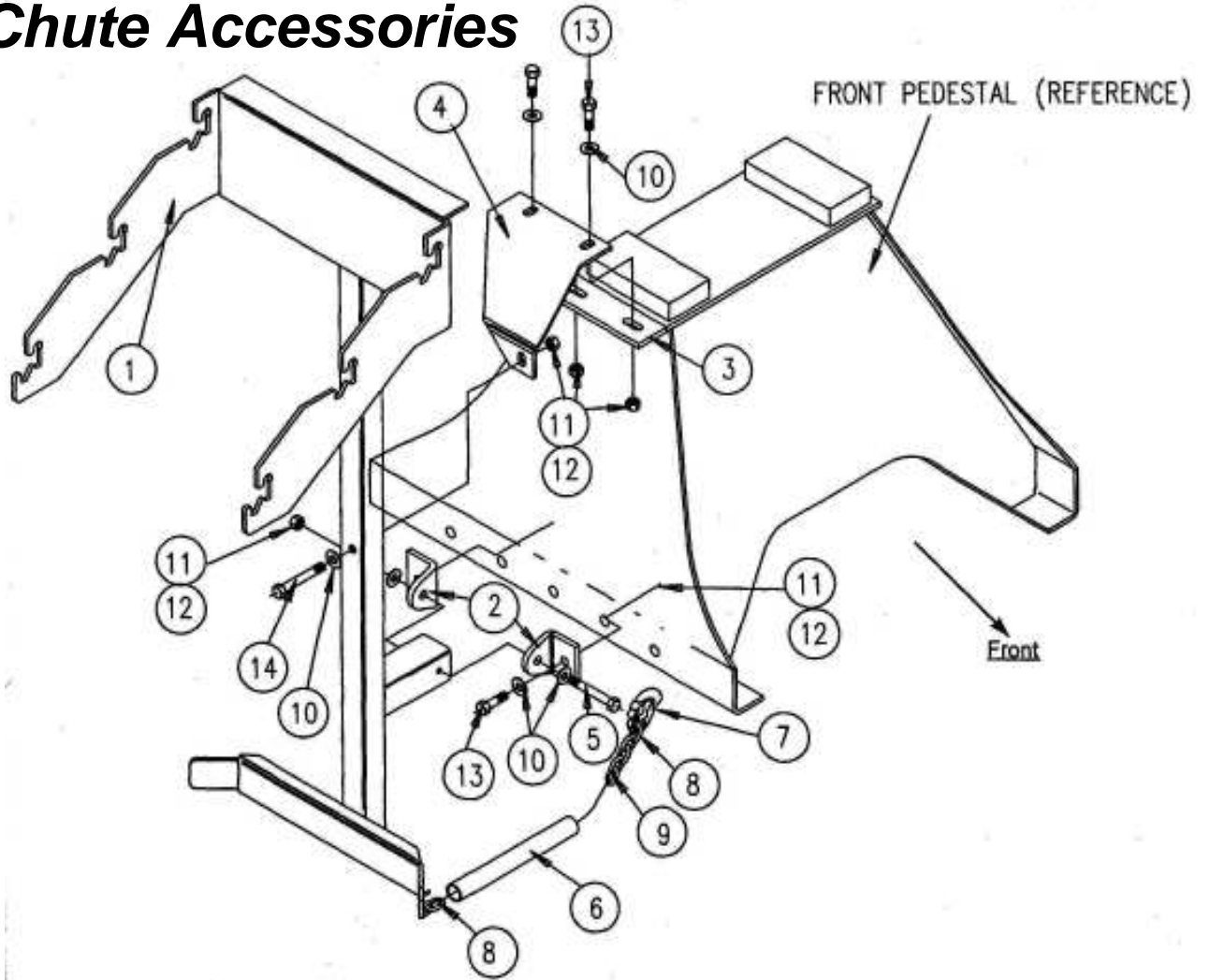
London Mixer Parts Chute Accessories

Rear Pedestal Mounted



<u>Item #</u>	<u>CMS #</u>	<u>OEM Part#</u>	<u>Description of Part</u>	<u>Qty</u>
1	C 1048	60001001000048	Rear Pedestal Chute Rack	1
2	C 1047	43897078	Lower Chute Rack Bracket	1
3	C 1042	43897008	Chute Bracket Angle	2
4	B 5325		1/2-13 x 3-1/4" Hex Bolt	1
5	UW 5000		1/2" Washer	16
6	LN 5000		1/2" Locknut	8
7	B 5150		1/2-13 x 1-1/2" Hex Bolt	7
8	C 1046	00981002	PVC Coated Cable (56")	3
9	C 1034 A	115237	Snap Hook	3
10	C 1043	00984001	Cable Thimble	6
11	C 1044	00983001	Compression Sleeve	6
12	C 2010	43897001	Steel Extension Chute	3
13	C 2010 A	43897001AL	Aluminum Extension Chute	3
14	C 1052	60001001000050	Rack Brace	1

London Mixer Parts Chute Accessories



<u>Item#</u>	<u>CMS #</u>	<u>Description of Part</u>	<u>Qty</u>
1	MC-38829	Chute Rack - London Standard	1
1	MC-37830	Chute Rack - London Paver	1
1	MC-39690	Chute Rack - McNeilus	1
2	MA-37836	Hinge Brackets	2
3	MA-37838	Pedestal Extension	1
4	MB-37839	Stabilizer Plate ZF	1
9	HH-00789-005	Coil Proof Chain Assy with hook	1

London Mixer Parts

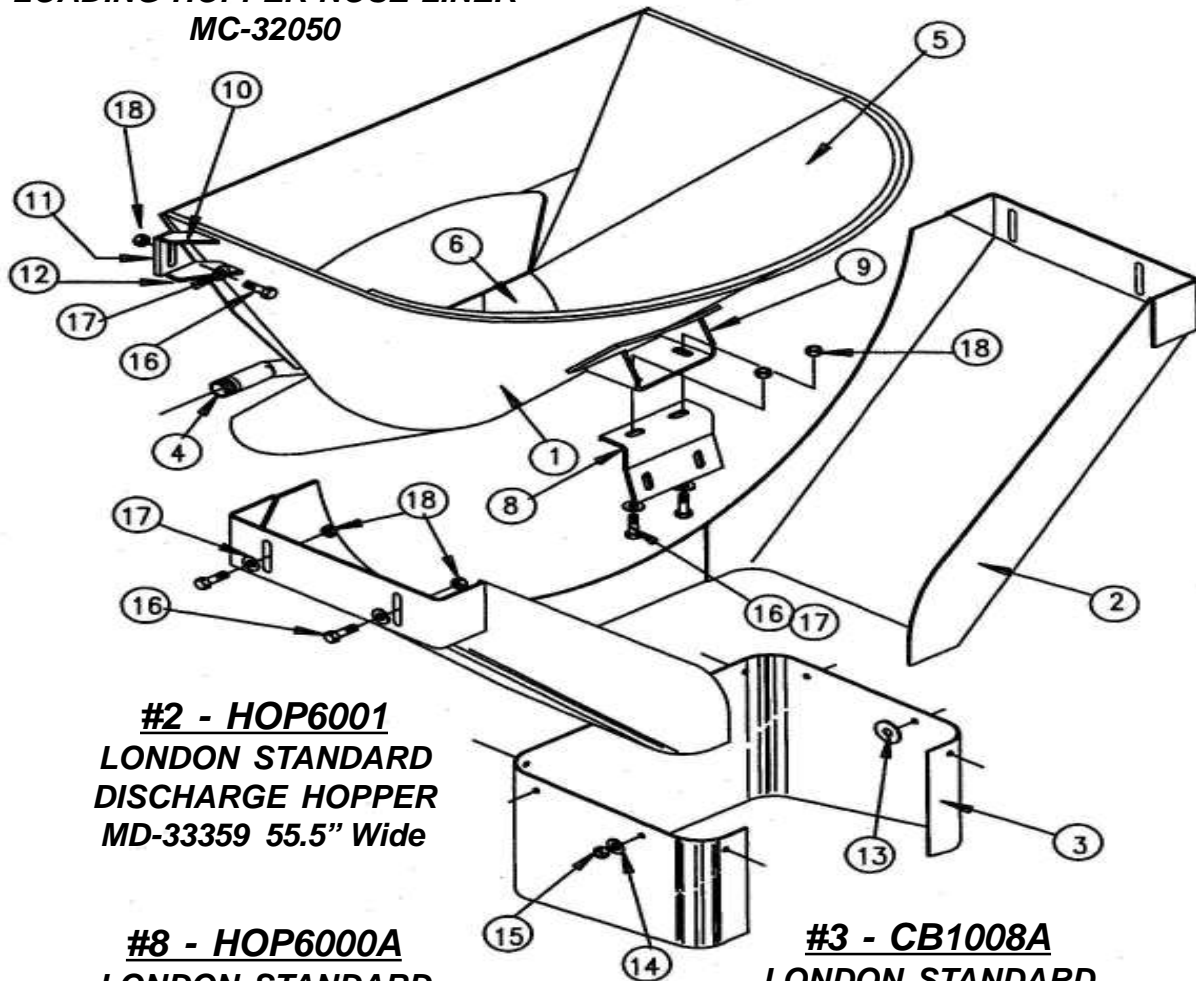
London Hoppers

Standard

#5 - HOP L 2010
LOADING HOPPER BODY LINER
MC-32744

#6 - HOP-L-2002
LOADING HOPPER NOSE LINER
MC-32050

#1 - HOP6000
LONDON STANDARD
LOADING HOPPER
MD-39753



#2 - HOP6001
LONDON STANDARD
DISCHARGE HOPPER
MD-33359 55.5" Wide

#8 - HOP6000A
LONDON STANDARD
LOADING HOPPER SUPPORT BRACKET
MB-37332

#3 - CB1008A
LONDON STANDARD
HOPPER RUBBER
MB-29376

#9 - HOP6000B
LONDON STANDARD
LOADING HOPPER SUPPORT
MB-38895

#4 - W6000
LONDON STANDARD
HOPPER WATERPIPE
MB-38896

London Mixer Parts

London Hoppers

Paver

#5 - HOP L 2010

LOADING HOPPER BODY LINER
MC-32744

#6 - HOP-L-2003

LOADING HOPPER NOSE LINER
MC-37986

#16 - HOP-L-2004

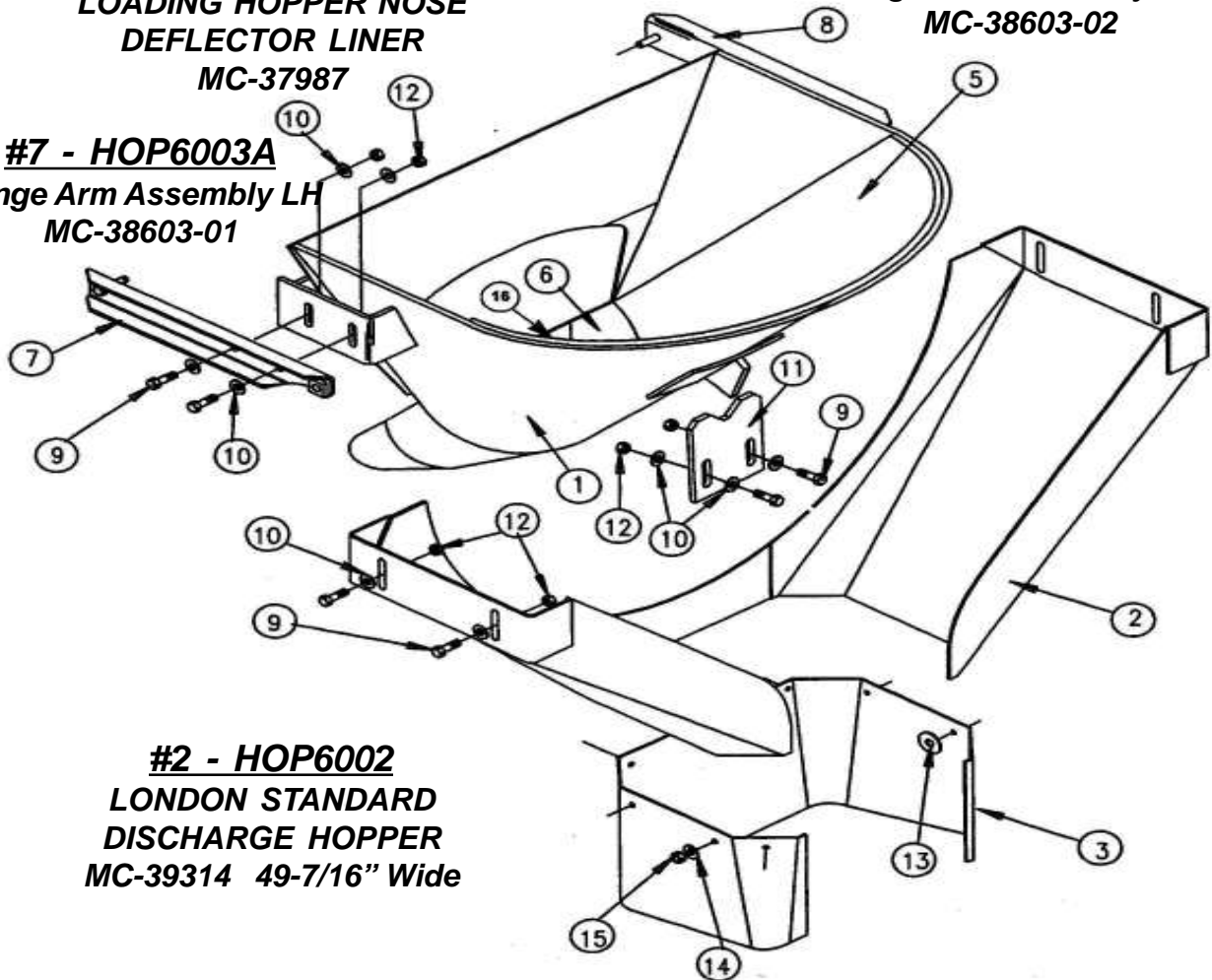
LOADING HOPPER NOSE
DEFLECTOR LINER
MC-37987

#7 - HOP6003A

Hinge Arm Assembly LH
MC-38603-01

#8 - HOP6003B

Hinge Arm Assembly RH
MC-38603-02



#2 - HOP6002

LONDON STANDARD
DISCHARGE HOPPER
MC-39314 49-7/16" Wide

#11 - HOP6004

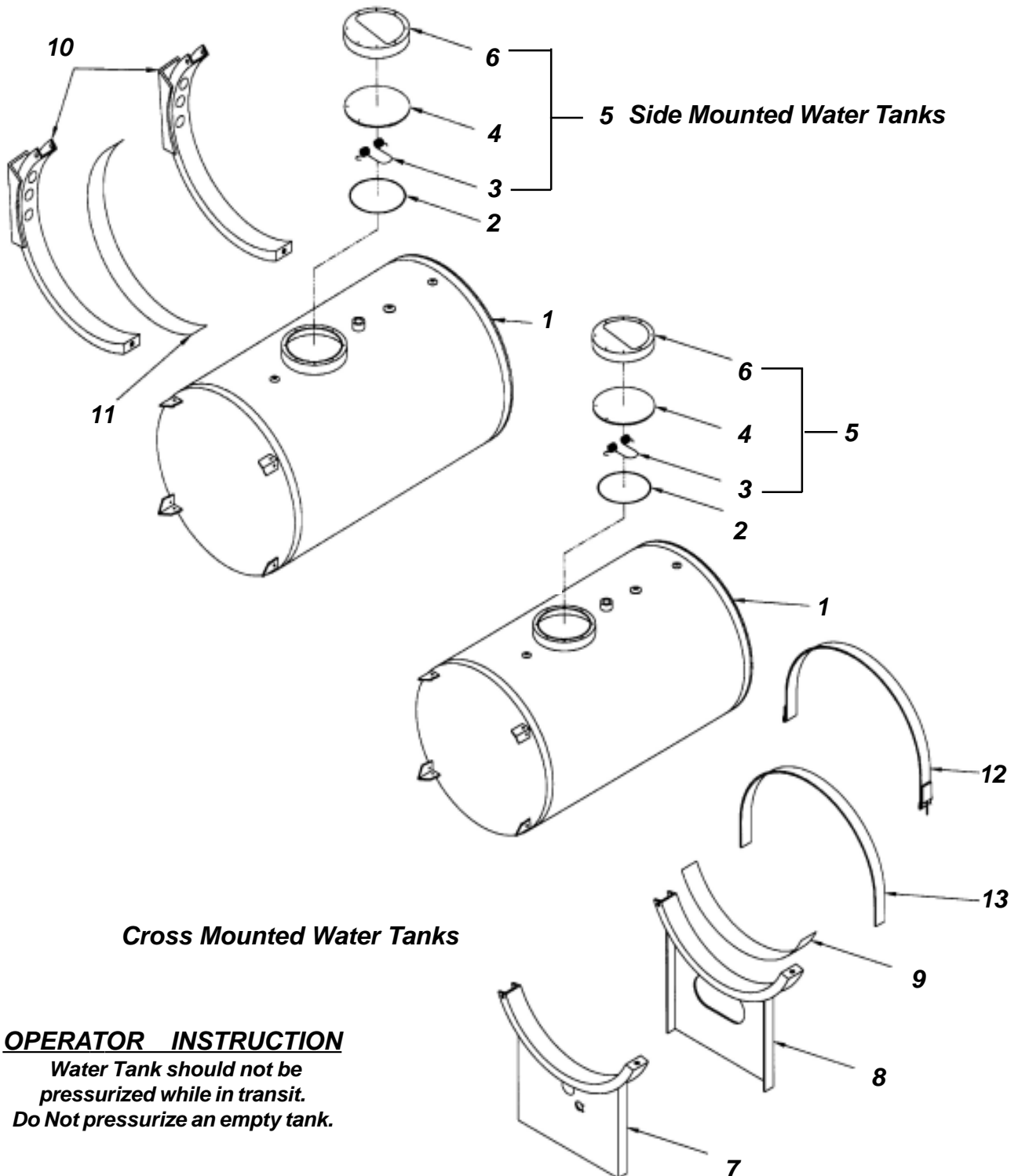
Lower Support Stop
MB-38602

#3 - CB1008

LONDON PAVER
HOPPER DISCHARGE RUBBER
MB-38566

London Mixer Parts

Water Tank



Cross Mounted Water Tanks

OPERATOR INSTRUCTION

*Water Tank should not be
pressurized while in transit.
Do Not pressurize an empty tank.*

London Mixer Parts

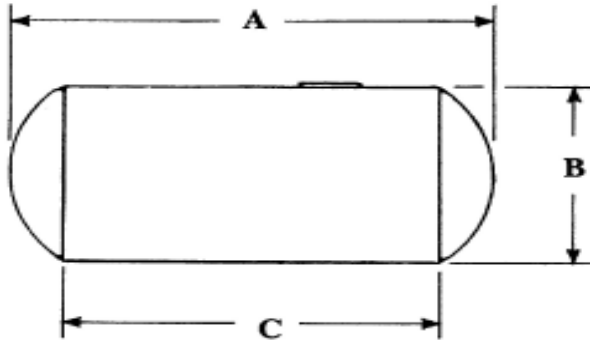
Water Tank

<u>Item #</u>	<u>CMS #</u>	<u>OEM Part#</u>	<u>Description of Part</u>	<u>Qty</u>
1	WT 0090	420.151763	90 Gal. Side Mount Steel	
	WT 0090A	420.182750	90 Gal. Side Mount Aluminum	
	WT 0100	420.151765	100 Gal. Side Mount Steel	
	WT 0100A	420.182750	100 Gal. Side Mount Aluminum	
	W 1074	420.151770	125 Gal. Side Mount Steel	
	W 1075	420.182770	125 Gal. Side Mount Aluminum	
	W 1076	420.151775	150 Gal. Side Mount Steel	
	W 1076A	420.182800	150 Gal. Side Mount Aluminum	
	WT 0200	420.152927	200 Gal. Side Mount Steel	
2	W 1001	100.115212	Tank Cover Gasket	1
3	W 1002	020.115184	Tank Flapper Spring	1
4	W 1000	400.150831	Tank Flapper	1
5	W 1003	400.150830	Flapper Assy (Items 2,3,4 & 6)	1
6	W 1000 A	320.150830	Cover	1
7 & 8	W 1086	320.500485	Cross Mount Saddle 15"	2
7 & 8	W 1087	320.182874	Cross Mount Saddle 11"	2
9	W 1084 A	120.82526	Rubber Strip	2
10	W 1091 A	MD-35482-01	London 24" Side Mt Tank Brkt	2
12	W 1092 A	MC-34695-01	London 24" Side Mt Tank Strap	2
10	W 1082	320.82378A	MTM 26" Side Mount Tank Brkt	2
12	W 1083	320.82379A	MTM 26" Tank Strap	2
10	W 1091	33592	Smith 26" Side Mt Tank Brkt	2
12	W 1092	33593	Smith 26" Tank Strap	2
10	W 1093	28522D	Smith 30" Side Mt Tank Brkt	3
12	W 1094	28525B	Smith 30" Tank Strap	3
11	W 1084 A	120.82526	Rubber Strip	2
13	W 1084	120.215217	MTM Side Mt Tank Strap Rubber	2
Accessories (Not Shown)				
	W 1071	120.102028	1" Water Hose	
	W 1072	120.00005	1-1/4" Water Hose	
	W 1042	260.101306	1/2" Ball Valve	
	W 1043	260.82098	3/4" Ball Valve	
	W 1044	260.01008	1" Ball Valve	
	W 1045	260.82097	1-1/4" Ball Valve	
	W 1046	260.01001	1-1/2" Ball Valve	
	W 1046-2	260.01009	2" Ball Valve	
	W 1061	400.82243	Spray Nozzle	
	W 1062	120.82242	Washdown Hose 5/8 x 25ft	
	W 1063		Insulated Spray Nozzle	

London Mixer Parts

Water Tank

Water Tank Accessories

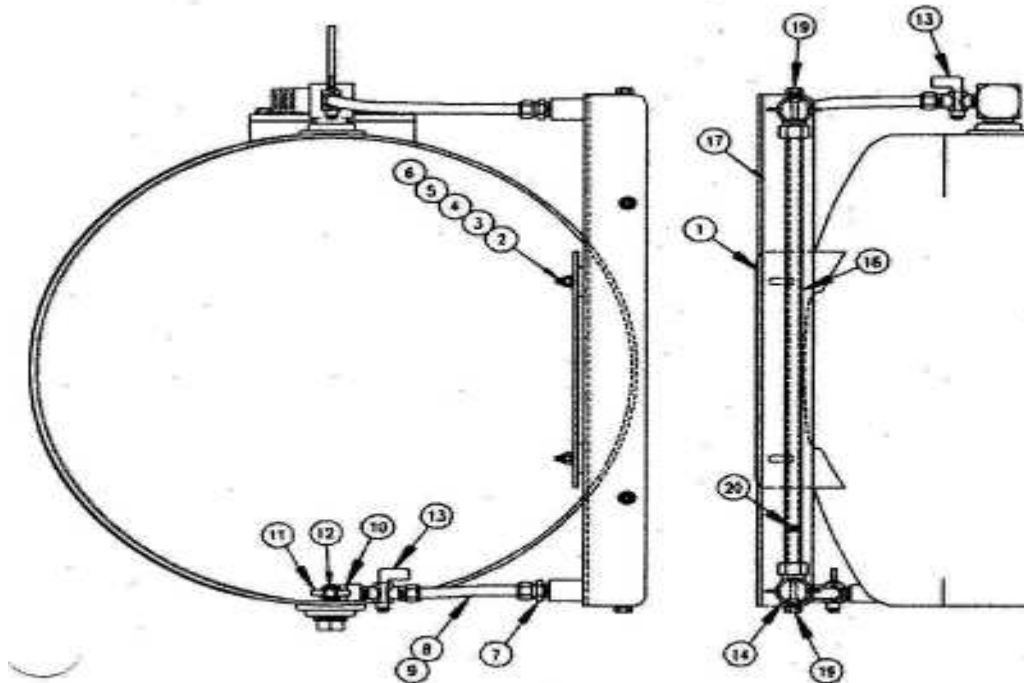
Water Tank Part Numbers

WT 0150 - Universal Steel Side Mount 150 Gallon
 WT 0150 A - Aluminum Side Mount 150 Gallon
 WT 0150 B - 150 Gallon w/ Smith Top Mt Cradles
 WT 0150 C - 150 Gallon MTM Style Overhead Tank
 WT 0150 D - 150 Gallon Cross Mount Tank
 WT 0150 E - 150 Gallon Take-Off Tank
 WT 0150 F - 150 Gallon 24" Diameter
 WT 0150 G - 150 Gallon 30" Diameter
 WT 0150 OSH - 150 Gallon Oshkosh Cross Mount
 WT 0150 ADV - 150 Gallon Advance Cross Mount

WATER TANK SIZE U. S. Gallons	CMS Part #	A	B	C	Weight of Tank
90 Gallon Steel	WT 0090	43"	26"	34"	216#
90 Gallon Steel 24"	WT 0090 F	50"	24"	39"	
100 Gallon Steel	WT 0100	47.5"	26"	38"	245#
100 Gallon Steel 30"	WT 0100 G	38"	30"	27.5"	
125 Gallon Steel	WT 0125	58"	26"	49"	308#
125 Gallon Steel 30"	WT 0125 G	46"	30"	35.5"	
150 Gallon Steel	WT 0150	69"	26"	60"	370#
150 Gallon Steel 30"	WT 0150 G	54.5"	30"	44"	
200 Gallon Steel	WT 0200	70"	30"	60"	474#
250 Gallon Steel	WT 0250	86"	30"	76.5"	559#

London Mixer Parts

London Water Tank



Water Tank Scale Installation

<u>Item#</u>	<u>CMS #</u>	<u>OEM Part#</u>	<u>Description of Part</u>
1	W6001	MB-35707-24	24" Sight Gauge Mt Bracket-Side Mt
1	W6002	MB-38293-24	24" Sight Gauge Mt Bracket-Cross Mt
1	W6003	MB-35707-30	30" Sight Gauge Mt Bracket-Side Mt
1	W1098	MB-38293-30	30" Sight Gauge Mt Bracket-Cross Mt
2	B1100	HH-00293-006	Hex Head Screw 1/4-20 x 3/4"
3	UW1000	HH-00341-002	Flat Washer 1/4"
4	LN1000	HH-00294-001	Hex Locknut 1/4"
5	LW1000	HH-00457-006	Lockwasher 1/4"
6	HH-00078-003		Rubber Washer
7	HH-01096-024		Straight Connector 1/2" Tube/NPT
8	SYN0008	HH-00503-000	1/2" DOT Air/Water Tubing
9	HH-00978-003		Brass Eyelet
10	HH-00980-004		Service Tee 3/8"M x 3/8"F
11	W1090A	HH-00979-004	Drain Cock 3/8"
12	HH-01092-006		Brass Bushing 1/2" - 3/8"
13	HH-01095-007		Shut Off Valve 3/8" NPT x 1/2" Tube
14	W1054A	MA-36290-01/02	Gauge Fitting
16	W1036A	HH-00269-019	Glass Tube
17	See Sight Gauge Scale Chart (Next Page)		
19	MA-41017		Water Level Stop
20	W1049	MA-41018	Water Level Ball Red (W1049A Blue)

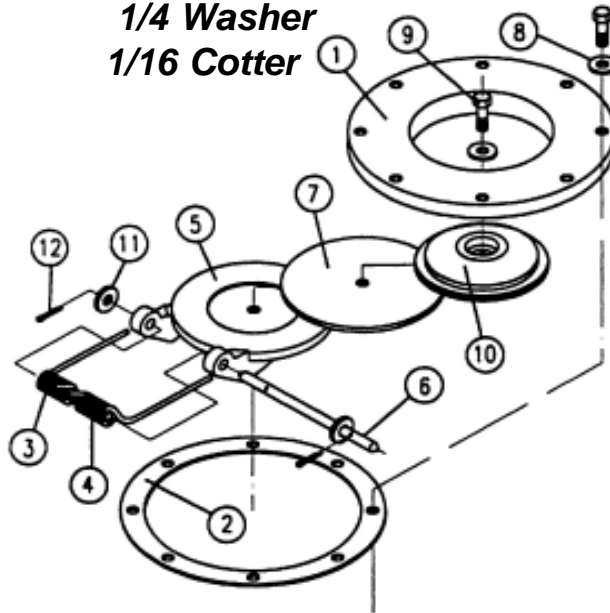
London Mixer Parts

London & Smith Water Tank Flapper MB-33606

<u>Item #</u>	<u>CMS #</u>	<u>OEM #</u>	<u>Description</u>
	W1016	MB-33606	Fill Assy
1	W 1016 A	MC-34960	Cover (No Longer Available)
2	W 1017	MA-33603	Gasket
3	W 1019	MB33605-01	Spring
4	W 1020	MB33605-02	Spring
5	W 1016 B	MB-33604	HingeCover
6	W 1018	MA-33598	Cover Pin
7	W 1015	MA-33600	Flapper Seal
8			1/4 Lwasher
9			1/4 x3/4Bolt
10	W 1016 C	MA-33601	Seal Clamp
11			1/4 Washer
12			1/16 Cotter

Sight Gauge Strips

WT1095A	90 Gallon Strip-24"	
WT1095	90 Gallon Strip-26"	
W1055A	100 Gallon Strip-24"	
W1055	100 Gallon Strip-26"	
W1055B	100 Gallon Strip-30"	
W1056A	125 Gallon Strip-24"	
W 1056	125 Gallon Strip-26"	
W1056B	125 Gallon Strip-30"	
W1057A	150 Gallon Strip-24"	
W 1057	150 Gallon Strip-26"	
W1057B	150 Gallon Strip-28"	Oshkosh
W 1058	200 Gallon Strip-30"	
W 1058 A	200 Gallon Strip-28"	
W1096	250 Gallon Strip-30"	
W 1097	250 Gallon Strip-28"	
W 1059	300 Gallon Strip-36"	
W 1060	385 Gallon Strip-36"	

Water Hose - Bulk Length

W 1071	1" Black Water Hose
W 1072	1-1/4" Black Water Hose
W 1073	1-1/2" Black Water Hose

London Mixer Parts

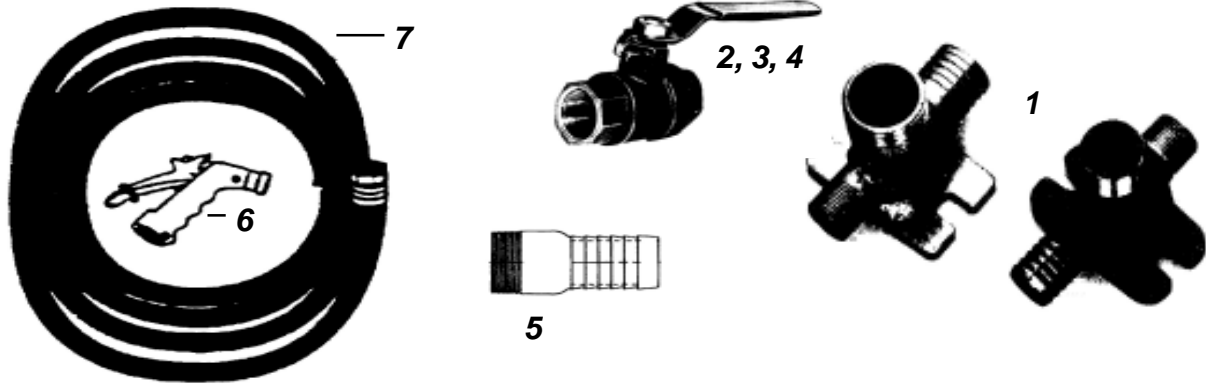
Water Tank

<u>Item#</u>	<u>CMS #</u>	<u>OEM Part#</u>	<u>Description of Part</u>
1	MM-22778	same	Pressure Protection Valve
2	MM-19850	same	Check Valve 1/4" NPT
3	HH-00878-002	same	Drain Cock 1/4 NPT
4	HH-00980-002	same	Tee, Street 1/4" NPT
5	HH-01091-002	same	Tee, 1/4" NPT Female
6	MA-28572	same	Pressure Relieif Valve
7	W1022	MM-2734	3-Way Shut-off Valve
8	HH-0189-002	same	1/4" NPT Elbow 90 degree
9	W1023A	MA-14870	Air Pressure Gauge 1/4 NPT
10	MA-14868	same	Pressure Regulator
11	HH-00425-002	same	Str Connector 1/4" Barbx1/4"NPT
12	HH-01094-002	same	Elbow, 1/4" Barb x 1/4" NPT

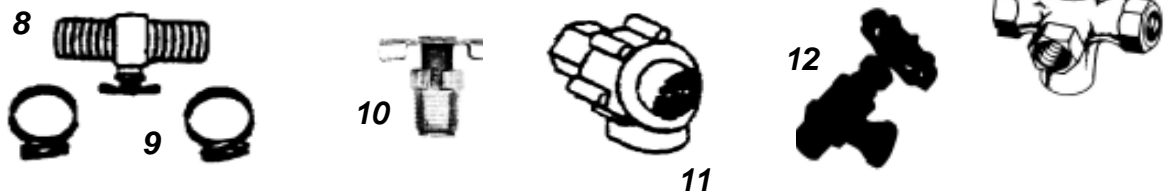
London Mixer Parts

Water Tank

Water Tank Accessories



<u>Item #</u>	<u>CMS #</u>	<u>OEM Part#</u>	<u>Description of Part</u>	<u>Qty</u>
1	W 1040	3586004	1" Aluminum Water Tee	1
1	W 1039	3586005	1-1/4" Steel Water Tee	1
2	W 1043	3461003	3/4" Brass Ball Valve	1
3	W 1044	5766000	1" Brass Ball Valve	1
4	W 1045	5115000	1-1/4" Brass Ball Valve	1
5	W 1037	0276000	1" King Fitting	1
5	W 1038	0276001	1-1/4" King Fitting	1
6	W 1061	400.82243	Nozzle, Washout Spray Uninsulated	
6	W 1063	0555000	Nozzle, Washout Spray Insulated	
6	W 1063 A	400.82573	Nozzle, Washout Spray Plastic	
7	W 1062	120.82242	Washdown Hose 5/8 x 25 Foot	
8	W 1047	0206200	1" Drain Assembly	
9	W 2016	0047006	1" Hose Clamps	
10	W 1090	040.201600	1/8" Drain Cock	
11	W 1031	9252	Quick Exhaust Valve	
12	W 1048		3/4" Faucet	
13	W 1022	260.82404	3 Way Valve	
14	W 1071	120.102028	1" Black Water Hose (Not Shown)	
	W 1072	120.00005	1-1/4" Black Water Hose	
	W 1073		1-1/2" Black Water Hose	
	W 1028		Pop Off Valve	
	W 1024		Garden Hose Adaptor	



London Mixer Parts

London Control Handles



CON2000 Single Switch Handle

CON2000A Double Switch Handle

HH-01224-012 Flex Strain Relief



CSW1000 On/Off Micro Switch

CSW1001 Momentary Micro Switch

CSW1002 On/Off with Pigtail

CSW1003 Momentary with Pigtail



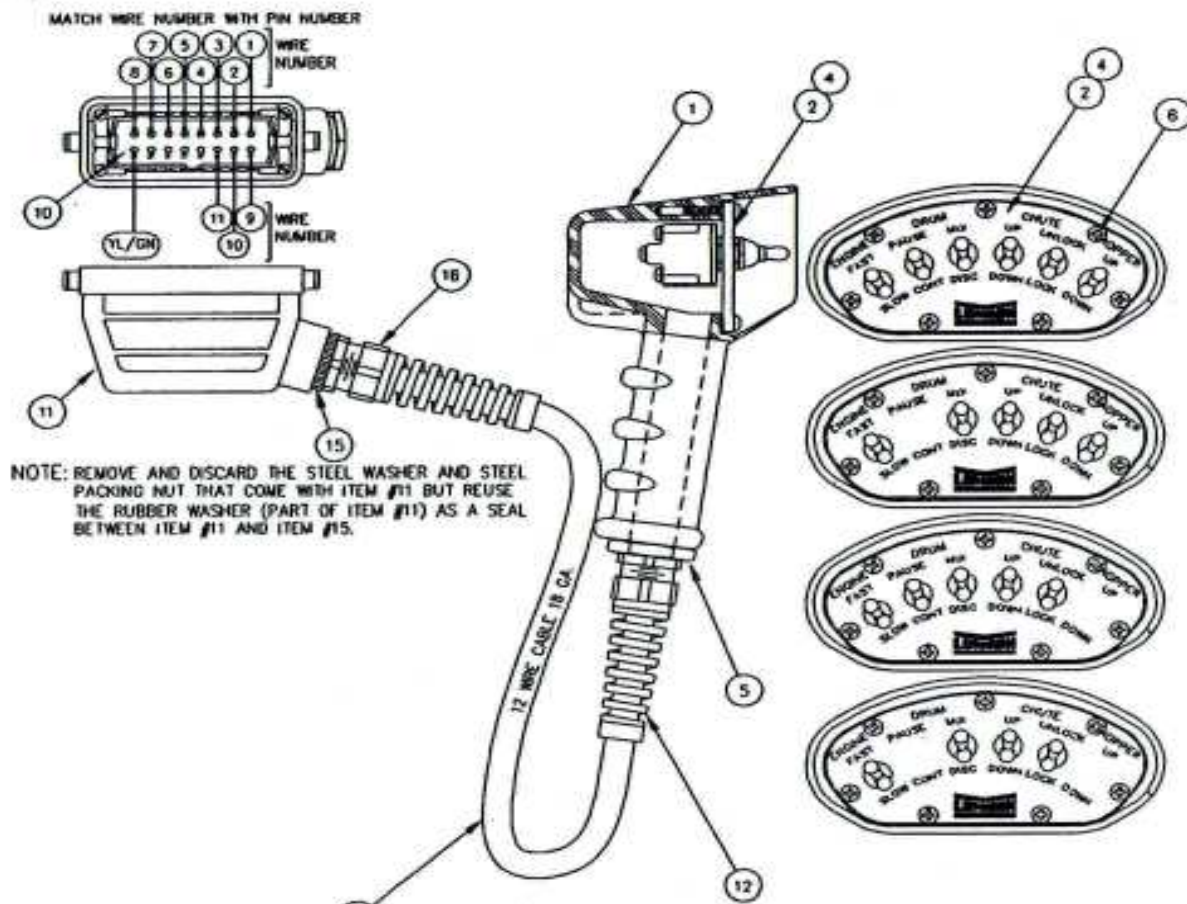
CSW1001A Switch Boot



CON2000AK Single Switch Handle Assembly

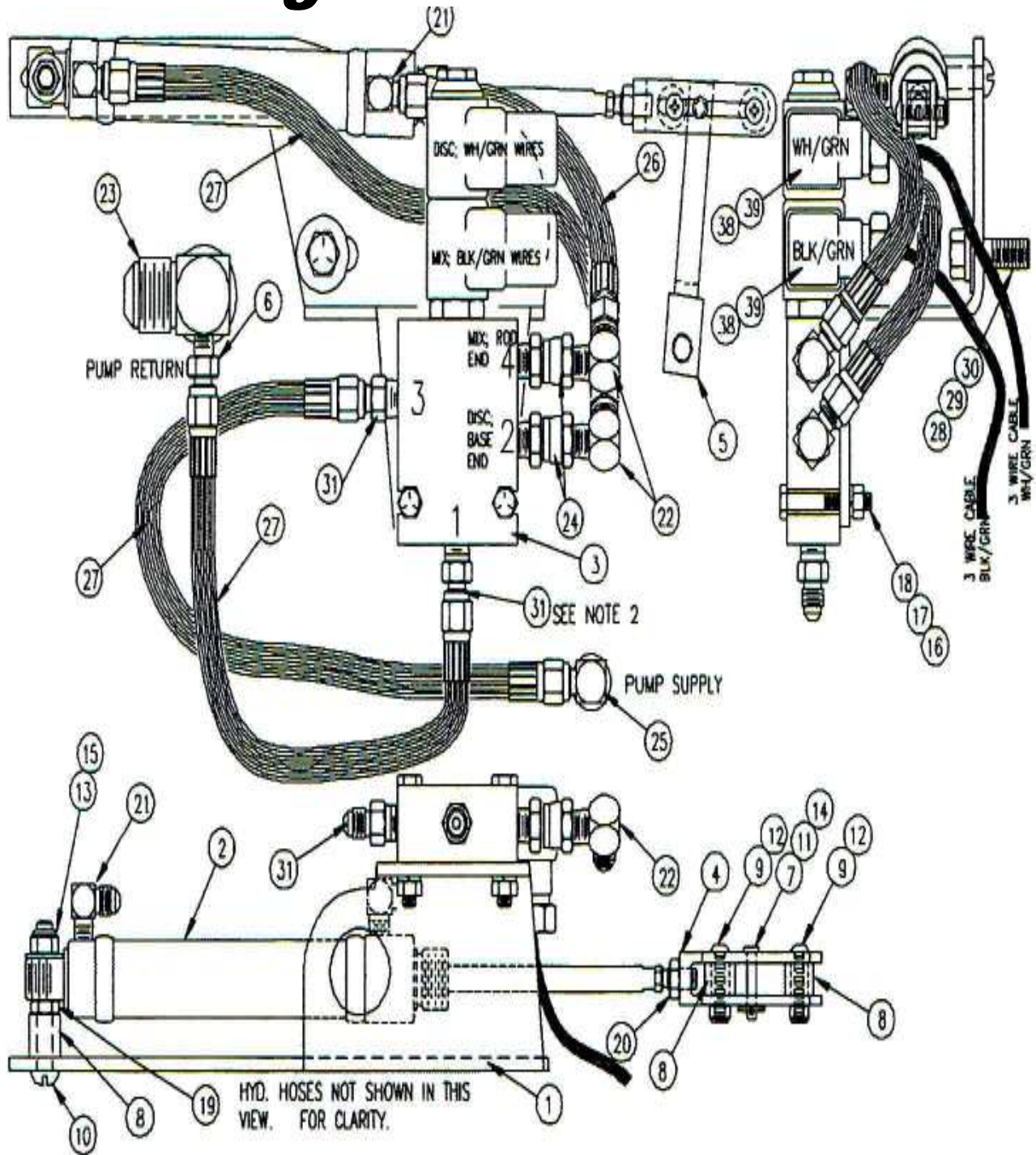
CON2000BK Double Switch Handle Assembly

London Mixer Parts *London Control Handles*



<u>Item#</u>	<u>CMS #</u>	<u>Description of Part</u>	<u>Qty</u>
1	MC-39741	Multi Switch Yellow Handle	1
2	MB-39739	Multi Switch Plate	1
2	MB-39739A	Switch Plate Decal	1
3	ELCON18-12	Electric Cable 12 Wire 18ga	20ft
4	MB-39740	Face Plate Gasket	1
5	HH-01185-005	Reducer 3/4-1/2 NPT Black	1
6	HH-00455-007	Steel Screw #6-3/4"	7
7	MA-38416	Micro Switch	
8	MA-26602	Micro Switch Momentary (CSW1001)	
9	CSW1001A	Rubber Boot - Switch	
10	MA-39997	Male Plug	
11	MA-39999	Cover Plug Mount	
12	HH-01224-012	Flex Cord Grip 1/2	
15	HH-01245-013	Reducer Bushing	
16	HH-01246-030	Flex Cord Grip	

London Mixer Parts **Mix/Discharge Control Mounting**



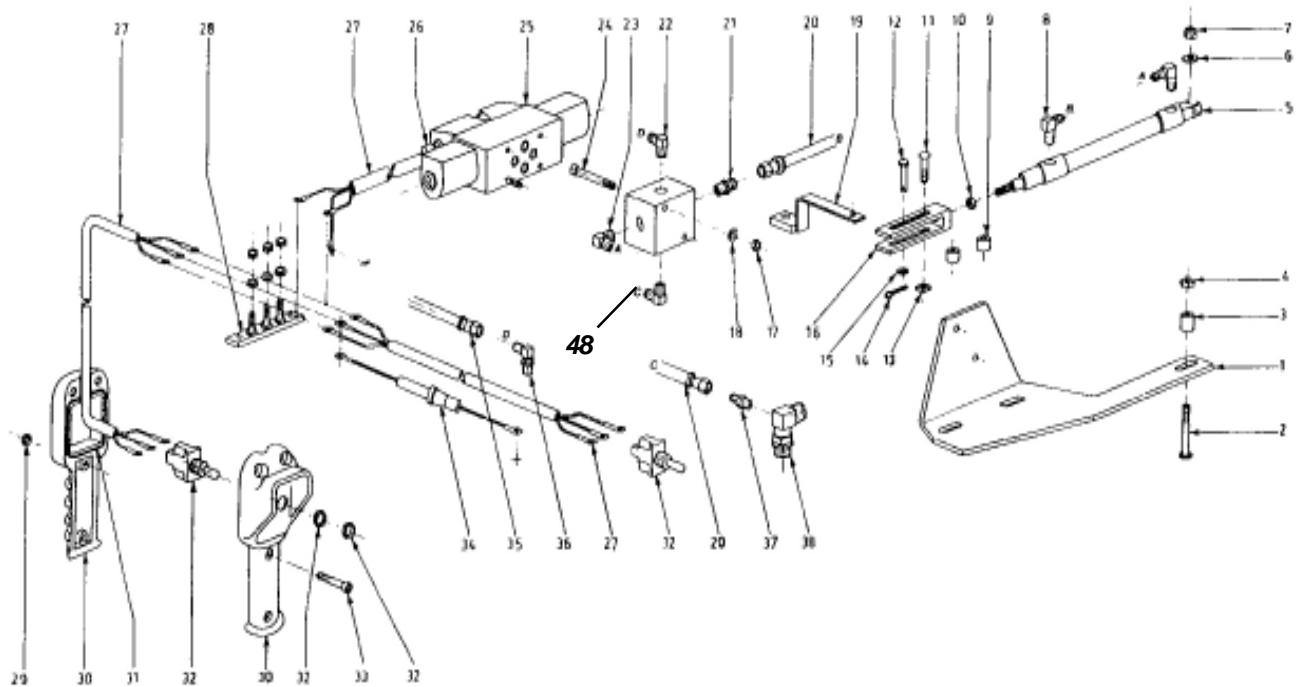
London Mixer Parts

Mix/Discharge Control

<u>Item#</u>	<u>CMS #</u>	<u>Description of Part</u>	<u>Qty</u>
1	MB-39874	Pump Control Bracket	1
2	ELCON1000	Hydraulics Cylinder	1
3	MA-39790	Control Valve - SV08	1
4	ELCON1012	Control Clevis	1
5	ELCON1003	Pump Control Lever	1
6	ELCON1022	Fitting	1
7	ELCON1006	3/16" x 1" Clevis Pin	1
8	ELCON1002A	Spacer 5/8" OD x 1/2" Long	3
9	HH-00013-113	Machine Screw Round Head 12-24 x1"2	
10	B2225	Machine Screw Rd Head 5/16-18x2-1/4"1	
11	ELCON1004	Cotter Pin 1/16" x 3/4"	1
12	HH-0340-022	Nylock Nut 12-24 NC	2
13	ELCON1015	5/16 Hex Jam Nut	1
14	HH-00341-001	3/16" Flat Washer	1
15	UW2000	5/16" Flat Washer	1
16	B1175	Hex Head Screw, 1/4-20 x 1-3/4	2
17	LN1000	Hex Locknut 1/4-20	2
18	LW1000	1/4" Lockwasher	2
19	HH-00294-002	5/16-18 Hex Nut NF	1
20	HH-00460-005	5/16-24 Hex Nut NF	2
21	HH-00784-016	Elbow 90 7/16-20M Jic x 1/8 NPT	2
22	HH-00784-017	Elbow 90 7/16-20M Jic x 1/4 NPT	2
23	HH-00893-003	St Adaptor 7/16-20M Jic x 1/8 NPT	1
24	HH-00794-003	Str. Swivel x 1/4" NPT	2
25	ELCON1023	#4 Jic M - #4 Orb M 90 Elbow Restricted	1
26	HH-01118-001	#4 Jic Sw Hose Assy - 9"	1
27	HH-01118-003	#4 Jic Sw Hose Assy - 14"	3
28	HH-00294-004	Hex Nut 7/16 - 14 UNC	2
29	HH-00341-005	Flat Washer 7/16"	2
30	HH-00293-070	Hex Head Screw 7/16-14 x 1-1/4"	2
31	HH-00893-004	Adapter	2
38	MA-38542	Hirshman Connector	2
39	ELCON18-3	3 Wire Cable 18 Ga x 15 ft	2
44	MA-41124	Diode Instl. Circuit Suppressor	Opt
45	MA-36779	Restrictor Fitting	Opt

London Mixer Parts

Electric Pump Control Assembly London & Smith



<u>Item #</u>	<u>CMS #</u>	<u>OEM Part#</u>	<u>Description of Part</u>	<u>Qty</u>
1	ELCON 1002	31697001B	Mounting Bracket	1
2	B2200		5/16 x 2" Machine Screw	1
3	ELCON 1002 A	30299	Spacer	1
4	ELCON 1015		5/16 Hex Jam Nut	1
5	ELCON 1000	30228	Cylinder	1
6	UW 2000		5/16 Flat Washer	1
7	LN 2000		5/16 Locknut	1
8	ELCON 1010	30267	90 Deg Elbow Connector	1
9	ELCON 1002 A	30299	Spacer	2
10	ELCON 1015		5/16 Hex Jam Nut	1
11-12	ELCON 1006	30244	3/16 x 1" Clevis Pin	2
13 & 15	UW 1000		1/4" Flat Washer	2
14	ELCON 1004		Cotter Pin	2
16	ELCON 1012	30118A	Control Clevis	1
17	LN 1000		1/4" Locknut	2
18	UW 1000		1/4" Washer	2
19	ELCON 1003	33506	Pump Control Lever	1
20	ELCON 1011	30543001	16" Hose Assembly	2
21	ELCON 1005	22121	Fitting	1
22	ELCON 1008	30247	Fitting	2
23	ELCON 1009	30249	Fitting	1

London Mixer Part

Roller Assembly

**SMITH
OSHKOSH
LONDON**

Complete Roller Assembly

**RS 1002
(MD-32123)**

Roller Sub Assembly

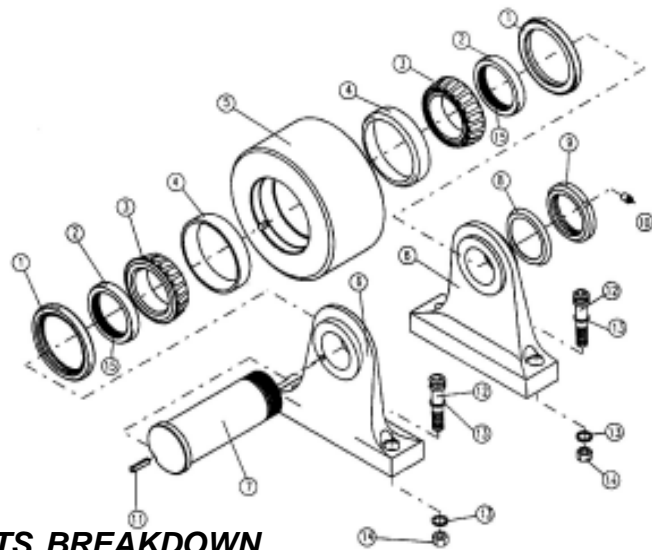
RS 1000 (just bearings & Seals)

RS 1001 (Less Roller Bracket)

Roller Shaft Assembly

RS 1012AK Shaft, Nut & Washer

Spacers - Orings

ROLLER PARTS BREAKDOWN

<u>Item #</u>	<u>CMS #</u>	<u>OEM Part#</u>	<u>Description of Part</u>	<u>Qty</u>
1	RS 1008	MM-22769	Roller Seal	2
2	RS 1009	MA-28859	Roller Spacer	2
3	RS 1010	MM-6006	Roller Bearing Cup	2
4	RS 1011	MM-6007	Roller Bearing Cone	2
5	RS 1003	MC-28852	Bare Roller	2
6	RS 1013	MD-32089	Roller Bracket	2
7	RS 1012	MB-29142	Roller Shaft	1
8	RS 1004	MM-6009	Lockwasher #13	1
9	RS 1007	MM-6008	Locknut #13	1
10	HW 9262	HH0232-001	Grease Fitting	1
11	RS 1005	HH0104-001	Roll Pin	1
12	B7300	HH0087-134	Hex Head Bolt, 5/8-11 x 2-3/4" Gr8	4
13	UW7000	HH0613-002	Hardened Washer, 5/8"	16
14	LN7000	HH0086-005	Locknut, 5/8-11 UNC	4
15	RS 1006	HH0116-053	O'Ring	2

London Mixer Part

Roller Assembly

3-7/8" McNeilus
Roller Assembly

MTM McNeilus



Complete Roller Assembly

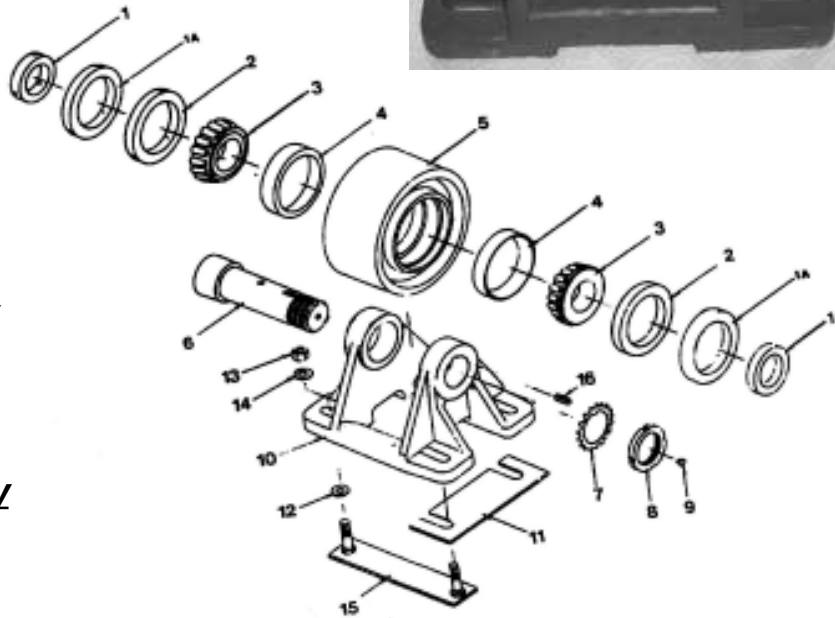
RM 1001
(220.150440)

Roller Sub Assembly

RM 1000
(220.157440)

Roller Shaft Assembly

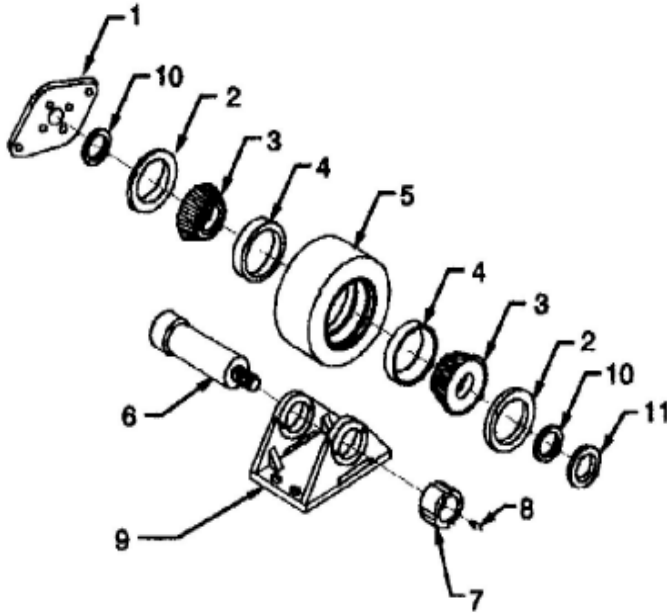
RM 1010AK
Shaft - Nut - Washer -
Spacers



ROLLER PARTS BREAKDOWN

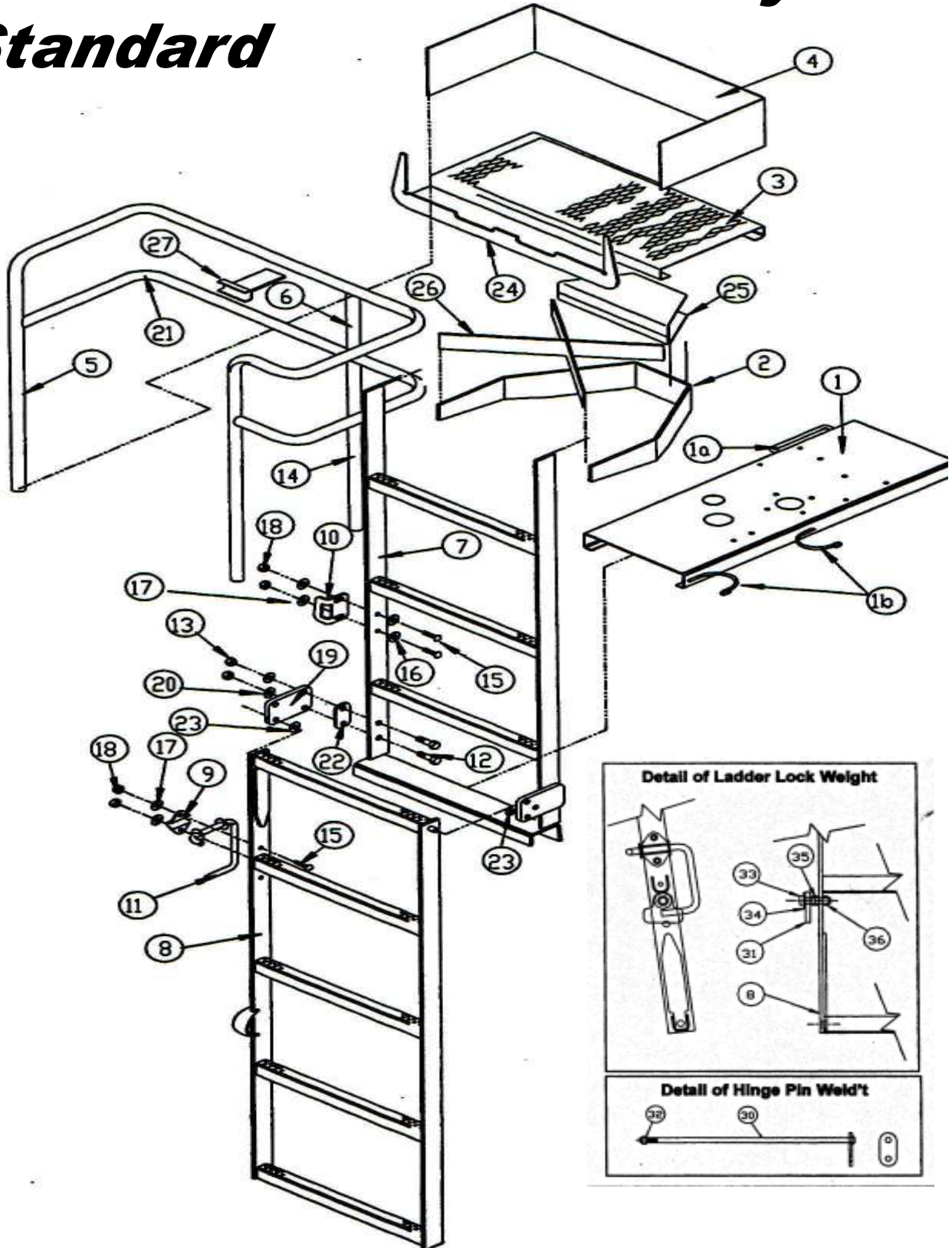
<u>Item #</u>	<u>CMS #</u>	<u>OEM Part#</u>	<u>Description of Part</u>	<u>Qty</u>
1	RM 1009	080.131433	Roller Spacer	2
1A	RM 1004	100.215258	Felt Seal	2
2	RM 1007	100.215250	Grease Seal (Install lip out)	2
3	RM 1006	080.82213	Cone, Roller Bearing	2
4	RM 1005	080.82214	Cup, Roller Bearing	2
5	RM 1011 A	220.150442	Roller, Bare 3-7/8" Wide	1
6	RM 1010	340.150443	Roller, Shaft	1
7	RM 1003	020.82206	Lockwasher #10	1
8	RM 1002	020.82216	Locknut #10	1
9	HW9262	020-82208	Grease Fitting 1/8"	1
10	RM 1011	320.150441	3-7/8" Roller Bracket	1
11	RM 1008	080.82218	Roller Shim	As Needed
12	UW 5000	020.05365	Washer, 1/2" Hardened	4
13	UW 5000	020.82219	Washer, 1/2" Hardened	4
14	LN 5000	020.05340	Locknut, 1/2" - 13 Gr8 UNC	4
15	RM 1012	020.150425	Bolt Bracket	2

London Mixer Parts

Roller Assembly**JAEGER**Complete Roller Assembly**RJ 1002
(80703-91)**Roller Sub Assembly
with bearings and seals**RJ 1001**ROLLER PARTS BREAKDOWN

<u>Item #</u>	<u>CMS #</u>	<u>OEM Part#</u>	<u>Description of Part</u>	<u>Qty</u>
1	RJ 1011	591521	End Cap	1
2	RJ 1004		Grease Seal	2
3	RJ 1005		Bearing Cone	2
4	RJ 1006		Bearing Cup	2
5	RJ 1007		Bare Drum Roller	1
6	RJ 1008	807021	Roller Shaft	1
7	RJ 1009		Slotted Nut	1
8	HW 9262		Grease Fitting	1
9	RJ 1000	591581	Roller Bracket	1
10	RJ 1003	806991	Roller Spacer	2
11	RJ 1010	591501	Retainer	1

London Mixer Parts **London Ladder Assembly Standard**



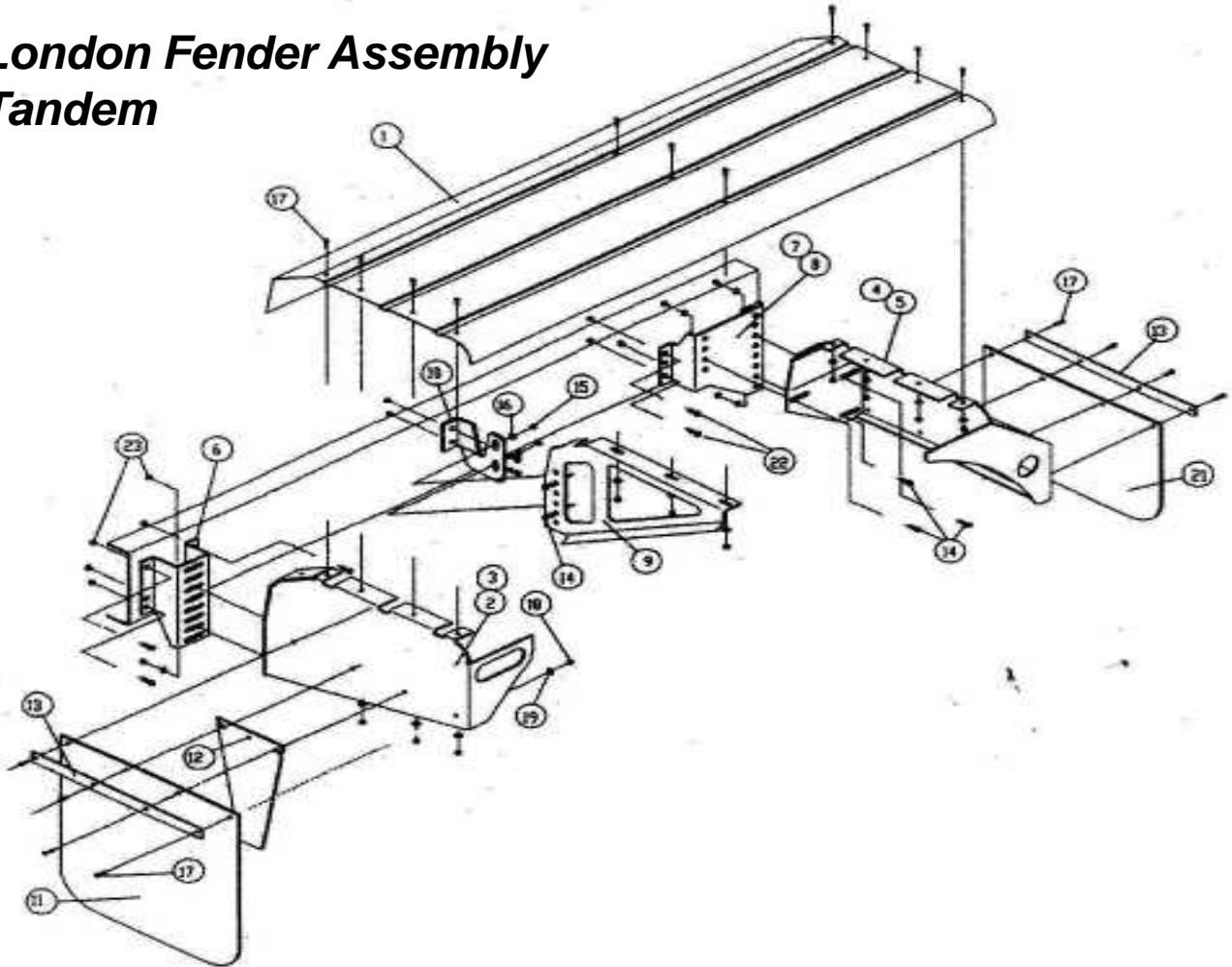
London Mixer Parts

London Ladder Assembly

<u>Item#</u>	<u>CMS #</u>	<u>Description of Part</u>
1	MB-40674	Rear Ladder Support
1a	MA-29270	Cable Hook
1b	MA-35666	Hose Hanger
2	MB-40396	Platform Support Plate
3	MB-35994-01	Safety Grating
4	MA-35879	Kick Plate
5	MB-40395	Handrail
6	MB-40398	Vertical Rail
7	MB-40669-01	Ladder Assy - 36-1/2"
7	MB-40669-02	Ladder Assy - 46-5/8"
8	MB-40665	Extension Ladder Assembly
9	MB-38746	Latch Hinge
10	MB-38745	Latch Catch
11	MB-38744	Latch Handle
12	B5150	Hex Head Screw 1/2-13 x 1-1/2"
13	LN5000	Locknut 1/2-13
14	MA-40409	Vertical Support Rail
15	HH-00971-043	Carriage Bolt 5/16-18 x 1"
16	UW2000	Flat Washer
17	LW2000	Lockwasher 5/16
18	LN2000	Locknut 5/16-18
19	MA-38740	Ladder Pivot Bracket
20	LW5000	Lockwasher 1/2"
21	MB-40394	Intermediate Rail
22	MA-38960	Spacer Plate
23	UW5000	Flat Washer
24	MB-39488	Front Platform Support
25	MB-40416	Support Reinforcement
26	MB-40397	Ladder Platform Brace
27	MB-40400	Platform Rail Brace
30	MB-39976	Hinge Pin Weldment
31	MA-39856	Ladder Lock Weight

London Mixer Parts

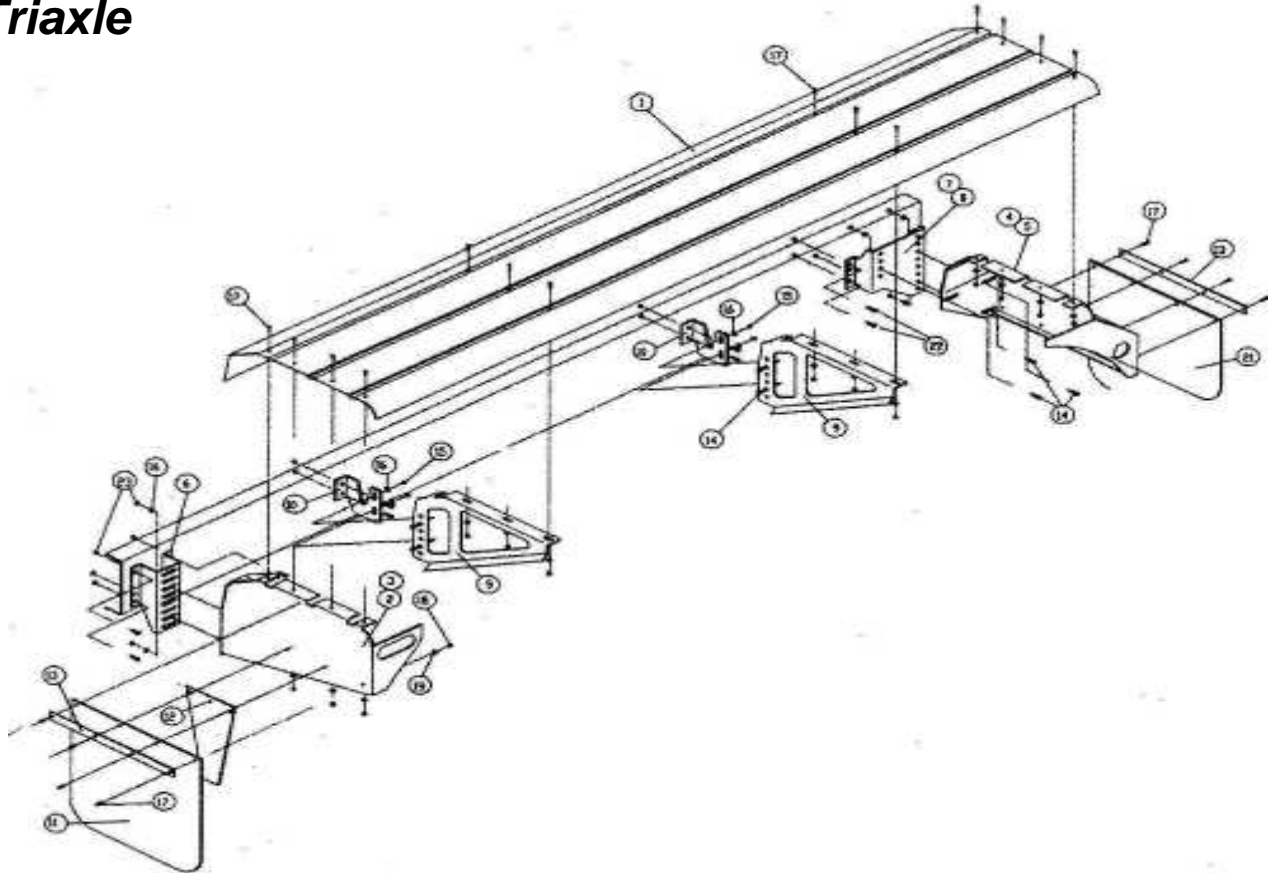
London Fender Assembly Tandem



<u>Item#</u>	<u>CMS #</u>	<u>Description of Part</u>
1	MA-38965-I07	London Steel Fender Top 107" with Ribs
1	MA-38965-I07S	London Steel Fender Top 107" Flat Top no ribs
1	MA-38967-107	London Aluminum Fender Top 107" with Ribs
1	MA-38967-107S	London Aluminum Fender Top 107" Flat Top no ribs
2	MC-38969-01	Front Fender Support RH
3	MC-38969-02	Front Fender Support LH
4	MC-38971-01	Rear Fender Support RH Standard Light
4	MC-38972-01	Rear Fender Support RH Dual Tail Light
5	MC-38971-02	Rear Fender Support LH Standard Light
5	MC-38972-02	Rear Fender Support LH Dual Tail Light
6	MB-38183	Front Adaptor Bracket
7	MC-38184-01	Rear Adaptor Bracket RH
8	MC-38184-02	Rear Adaptor Bracket LH
9	MB-38973	Center Support
10	MB-38970	Center Adaptor
11	MUD1001	24 x 30" Mud Flap
12	MUD1003	Mud Flap Bar

London Mixer Parts

London Fender Assembly Triaxle



<u>Item#</u>	<u>CMS #</u>	<u>Description of Part</u>
1	MA-38965-05	London Steel Fender Top Flat Top no ribs
1	MA-38967-05	London Aluminum Fender Top no ribs
2	MC-38969-01	Front Fender Support RH
3	MC-38969-02	Front Fender Support LH
4	MC-38971-01	Rear Fender Support RH Standard Light
4	MC-38972-01	Rear Fender Support RH Dual Tail Light
5	MC-38971-02	Rear Fender Support LH Standard Light
5	MC-38972-02	Rear Fender Support LH Dual Tail Light
6	MB-38183	Front Adaptor Bracket
7	MC-38184-01	Rear Adaptor Bracket RH
8	MC-38184-02	Rear Adaptor Bracket LH
9	MB-38973	Center Support
10	MB-38970	Center Adaptor
11	MUD1001	24 x 30" Mud Flap
12	MUD1003	Mud Flap Bar
21	MUD1000	24" x 24" Mud Flap

London Mixer Parts

Miscellaneous



BR1000 - 8" Acid Brush



C1000 - Plastic Chute Holddown Handle



BR1000A Acid Brush 20" Handle

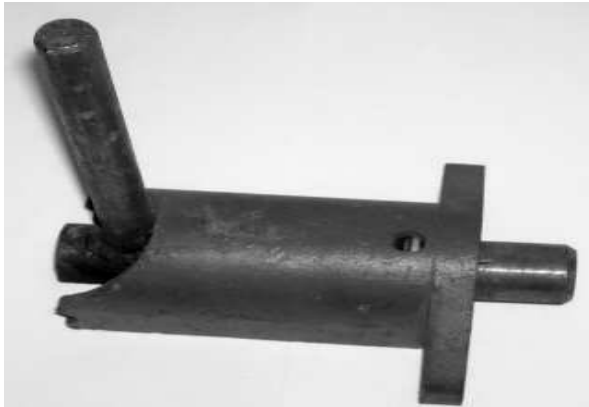


W1036 6ft Clear Sight Tube
W1036A 6ft Sight Tube Red Stripe



W1037 1" King Fitting
W1038 1-1/4" King Fitting

London Mixer Parts



**C1019 - London Manual
Chute Lock**



C1060 - 2pc Plastic Chute Scraper



**CB1004 - Std London
Bib MB-29376**

**CB1008 - London Paver
Bib MB-38566**



CON2000 - Yellow Handle Blank



**W1053A - Sight Gauge Valve
Sets Top & Bottom**



W1061 - Gilmour Nozzle



W1063 - Insulated Gilmour Nozzle



**W1062A - Red Hot Water
25ft Washdown Hose**



**W1054A - London Sight
Gauge Valve**

London Mixer Parts



**ELCON1000 - Pump
Control Cylinder MM-30228**

**ELCON1018 - DO3 Valve
MA-30230**



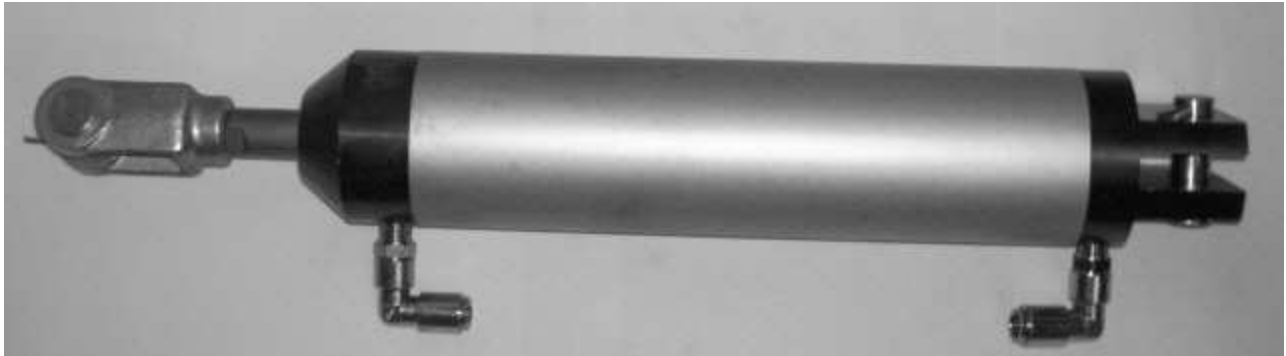
H1027 - 4" Slump Meter



H1040 - Eaton Chute Pump

Miscellaneous

London Mixer Parts



**HOP 1021 McNeilus Hopper
Lift Cylinder**

**MB-38614 London Hopper
Lift Cylinder**



**HP1003 - Rebuilt Eaton
Control Valve**



**H1017 - Eaton Control Valve
Gasket & Oring Kit**



H1022 - Eaton Shaft Seal Kit



**H1001 Filter Assy
10 Micron Suction Line**

**H1001A Spin On Filter
Cartridge Only**

London Mixer Parts

Miscellaneous



W1003 - McNeilus 6-3/4 Flapper Assembly



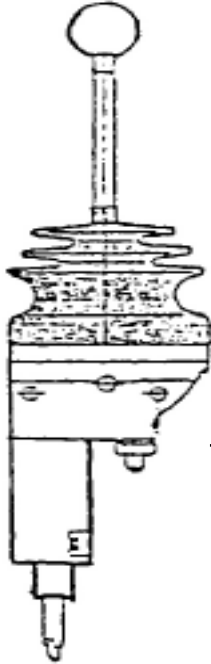
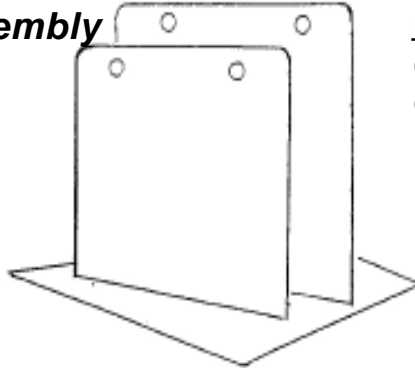
- W1016 - London Flapper Assy**
- W1019A - 2pc Spring Sets**
- W1015 - 4" Rubber Seal**
- W1018 - Flapper Pin**
- W1016A - Cover**

London Mixer Parts

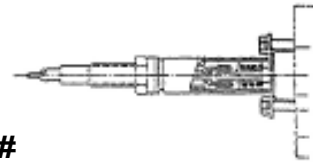
MA-35899 Manual Chute Control Valve

**SMITH CAB CABLE CONTROL
MANUAL VALVE Assembly**

**CMS#
C 1008 A
Cable Control Valve
Cab Mounting Stand**



**CMS#
C 1008 B
Cable Control Valve
Cab Mounted**



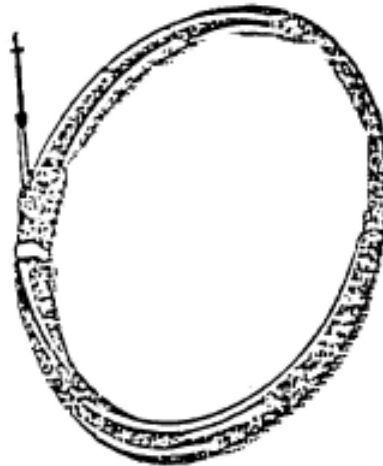
**CMS#
C 1006
Valve Connect Kit
Attaches to Back End of Manual
on Rear Pedestal**

CMS#

**C 1005 Single Acting
Cable Control Valve
Mounted on Rear
Pedestal**



**C 1007 Double Acting
Cable Control Valve
Mounted on Rear
Pedestal**



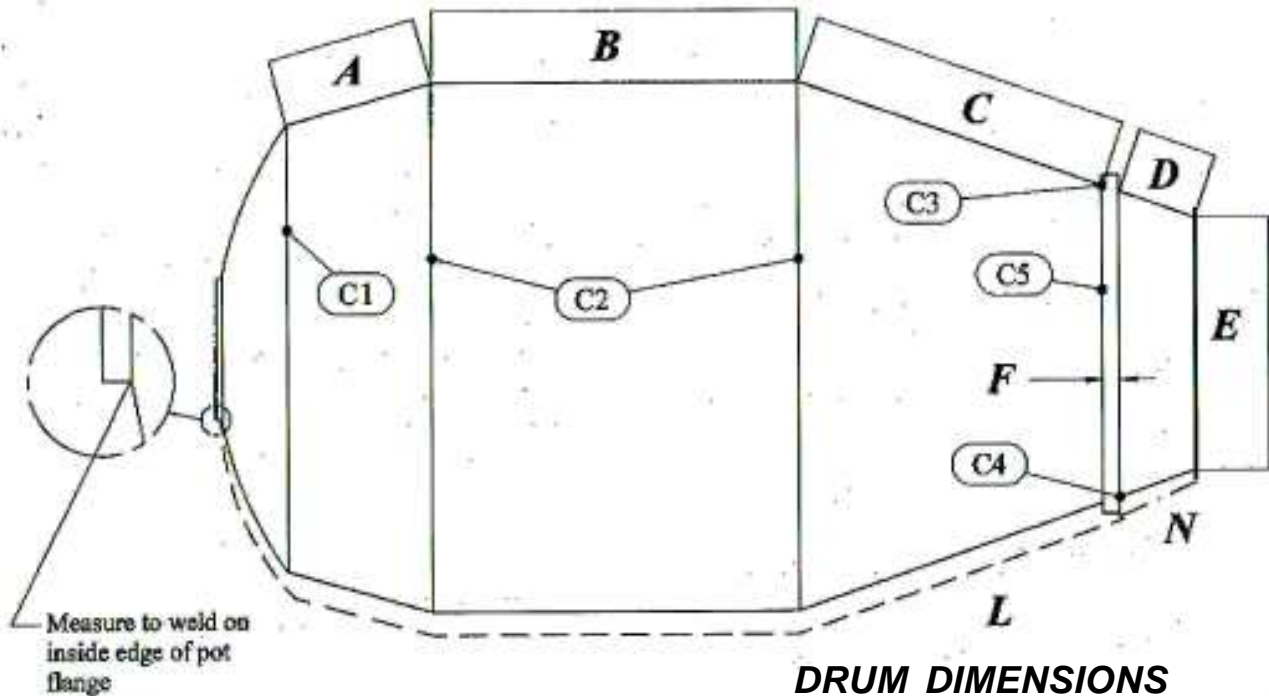
**CMS#
C 1020 Valve Cable 252"
C 1020 B Valve Cable 312"**

London Mixer Parts

Replacement Drums

CUSTOMER NAME & ADDRESS

Telephone and Fax #s



DRUM DIMENSION SHEET

DRUM DIMENSIONS (MEASURE WITH A FLAT TAPE MEASUREMENT ROUND DRUM)

A _____

C1 _____

B _____

C2 _____

C _____

C3 _____

D _____

C4 _____

E _____

C5 _____

F _____

**Number of Bolts in
Gearbox Flange** _____

L _____